



BODENSTECKDOSEN **SYSTEMTECHNIK**

Product catalog 2018



Since the foundation in the year 2005, we develop floor sockets, retractable supply posts, wall distributors, energy columns and LED-solutions for indoor and outdoor use. Priorities will be on design, quality and the best price-performance ratio.

Beside the extensive standard program, we offer individual developments and special design to you. A quick and efficient conversion of your demands is guaranteed by our varied achievement offer.

FLOOR SOCKETS AND RETRACTABLE SUPPLY POSTS

Our floor sockets are explained of solid cast aluminum, stainless steel or PVC in different forms. We can offer protection classes of IP 41 (drip-proof) for indoor use to IP 67 (water-proof) for the undeveloped outside area to our customers. The outlet applications dispose of a VDE mark. Also applications after French, Danish, Belgian or Switzerland standard are in our program of delivery.

CONTACT

BS Bodensteckdosen Systemtechnik GmbH
Oldermanns Hof 2a
D-33719 Bielefeld
Germany
Tel. +49 521 260109-90
Fax +49 521 260109-99
info@bodensteckdosen.com
www.bodensteckdosen.com

CONTACT PERSON

Switchboard:	Dorothea Sperle	+49 521 260109-90
Distribution:	Viktor Sperle	+49 521 260109-92
	Daniel Sperle	+49 521 260109-95
Construction:	Paul Pauls	+49 521 260109-93
Field service-east:	Peter Wiebe	+49 172 2386518

Edition 10/2017

INDEX OF CONTENTS

Floor sockets	5–25
Indoor.....	5–20
Outdoor.....	21–25
Floor box systems.....	27–37
Hollow space floor box systems.....	39–49
CEE-Floor sockets	51–57
Retractable supply posts.....	59–61
Energy columns	63–68
Wall distributors.....	69–72
General terms and conditions.....	74–75
 Product finder	 76



Floor sockets



1206

Equipment: Item No. 1206 1x Schuko, 1x RJ45 double

Surface-mounted floor box, 6-fold.

Very compact floor box made of solid aluminum in aluminum look anodized.

Dimension: 125x125x80mm

Supply: below

Easy installation, ideal for retrofitting sockets and network connections.



2290-2A

Equipment: Item No. 2290-2A 1x Schuko

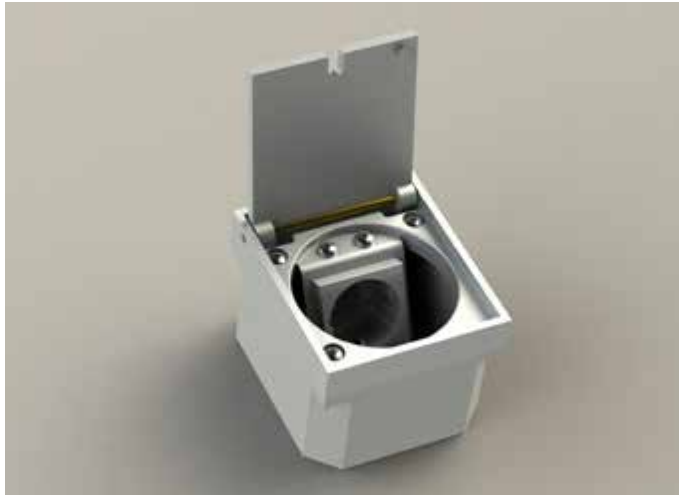
Floor socket with lockable hinged lid to be set at floor level. Single box made of aluminium nature with aluminium natural grinded lid.

Massive construction, drivable when closed, with lid seal. Suitable for cleaning with wet sweepers.

Dimension: 113x97x70mm

Supply: 2 conductor ports per M25 x1,5 mm

Other colors available by request.



2295-2A

Equipment: Item No. 2295-2A 1x Schuko

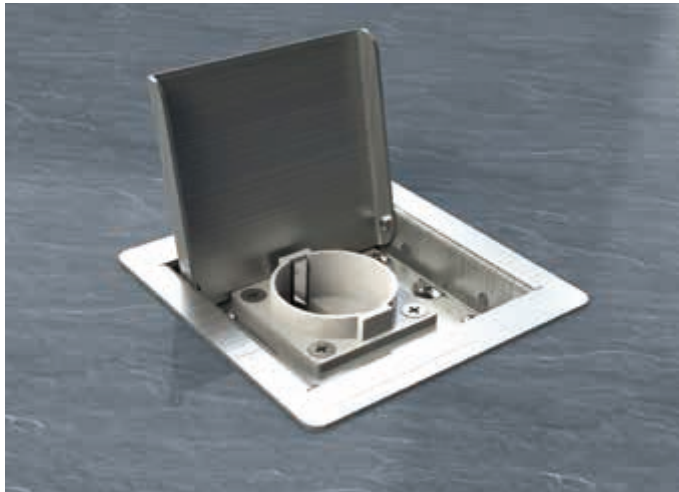
Floor socket with lockable hinged lid, also with plugged standard connector. Single box made of aluminium nature, to be set at floor/wall level with aluminium natural grinded lid.

Massive construction, drivable when closed and applicable for dry cleaning.

Dimension: 113x97x77mm

Supply: 2 conductor ports per M25 x1,5 mm

Other colors available by request.



3301-E | 3301-Enw

Equipment: Item No. 3301-E 1x Schuko
Item No. 3301-Enw1 1x Schuko, 2x RJ45 single (incl. Adapter box)

Floor socket made of 1.5mm stainless steel with hinged lid.

Dimension: 110x110x50mm

Adapter box: 92x89x60mm

Supply: below (in the adapter box in front and behind)

To assembly take out the carrier plate in front of the box. Right and left are two boreholes to affix the floor socket. Most suitable for low mounting depth, for example kitchen, exhibition area...





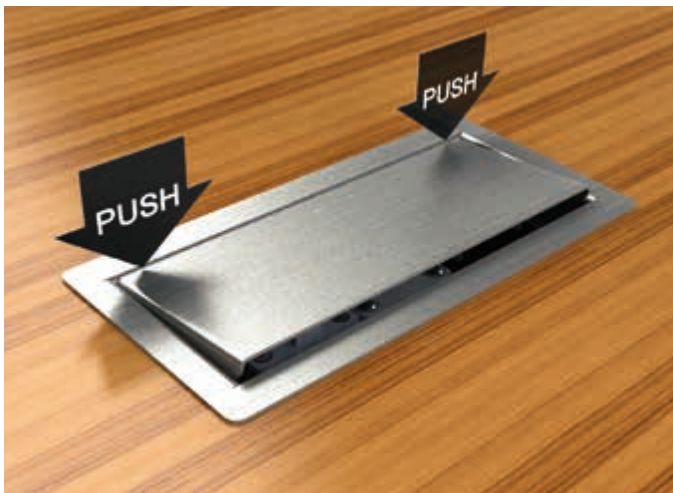
3302-E | 3302-Enw

Equipment:	Item No. 3302-E	2x Schuko
	Item No. 3302-Enw1	1x Schuko, 1x RJ45 double (incl. adapter box)
	Item No. 3302-Enw2	1x Schuko, 1x aerial (incl. adapter box)

Floor socket made of 1.5mm stainless steel with hinged lid.

Dimension:	160x110x42mm
Adapter box:	136x88x60mm
Supply:	below (in the adapter box in front and behind)

To assembly take out the carrier plate in front of the box. Right and left are two boreholes to affix the floor socket. Most suitable for low mounting depth, for example kitchen, exhibition area...



3303-E | 3303-Enw

Equipment:	Item No. 3303-E	3x Schuko
	Item No. 3303-Enw1	2x Schuko, 1x RJ45 double (incl. Adapter box)
	Item No. 3303-Enw2	2x Schuko, 1x aerial (incl. Adapter box)

Floor socket made of 1.5mm stainless steel with hinged lid.

Dimension:	220x110x42mm
Adapter box:	197x88x60mm
Supply:	below (in the adapter box in front and behind)

To assembly take out the carrier plate in front of the box. Right and left are two boreholes to affix the floor socket. Most suitable for low mounting depth, for example kitchen, exhibition area...





4402-E | 4402-Enw

Equipment:	Item No. 4402-E	2x Schuko
	Item No. 4402-Enw1	1x Schuko, 1x RJ45 double
	Item No. 4402-Enw2	1x Schuko, 1x aerial
Attachm.:	Item No. 4402	Adapter box

Floor socket made of 1.5mm stainless steel with hinged lid. Useable as table terminal area or floor box. Lid also closes with plugged standard connectors.

Dimension:	180x140x60mm
Installation opening:	160x120mm
Adapter box:	165x145x82mm
Supply:	back

For assembly the carrier plate can be removed.
Most suitable for bearing surface, exhibition area...



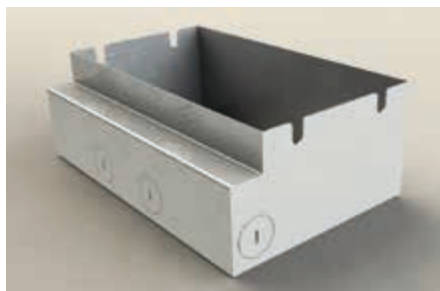
4403-E | 4403-Enw

Equipment:	Item No. 4403-E	3x Schuko
	Item No. 4403-Enw1	2x Schuko, 1x RJ45 double
	Item No. 4403-Enw2	2x Schuko, 1x aerial
Attachm.:	Item No. 4403	Adapter box

Floor socket made of 1.5mm stainless steel with hinged lid. Useable as table terminal area or floor box. Lid also closes with plugged standard connectors.

Dimension:	230x140x60mm
Installation opening:	215x120mm
Adapter box:	224x145x82mm
Supply:	back

For assembly the carrier plate can be removed.
Most suitable for bearing surface, exhibition area...





8302-A | 8302-Anw

Equipment: Item No. 8302-A 2x Schuko
 Item No. 8302-Anw1 1x Schuko, 1x RJ45 double
 Item No. 8302-Anw2 1x Schuko, 1x aerial

Floor socket made of solid aluminum with lockable hinged lid. Easy opening and closing of the lid by using the integrated snap lock. Closed the floor socket is splash proof by the lid seal and thus suitable for cleaning with wet sweepers.

Dimension: 140x140x80mm
Supply: 2 conductor ports per Ø 25mm

Frame and lids surface made of aluminum nature anodized. Other colors available by request.

The floor socket also can be provided with other devices!



8308-A | 8308-Anw

Equipment: Item No. 8308-A 8x Schuko
 Item No. 8308-Anw1 4x Schuko, 4x RJ45 double

Floor socket made of solid aluminum with lockable hinged lid. Easy opening and closing of the lid by using the integrated snap lock. Closed the floor socket is splash proof by the lid seal and thus suitable for cleaning with wet sweepers.

Dimension: 250x160x131mm
Supply: 4 conductor ports per Ø 25mm

Frame and lids surface made of aluminum nature anodized. Other colors available by request.

The floor socket also can be provided with other devices!





8601-A | 8601-Anw

Equipment:	Item No. 8601-A	1x Schuko
	Item No. 8601-Anw1	1x Schuko 1x RJ45 single
Attachm.:	Item No. 8601	Plastic insert (screed space holder made of PVC pipe)

Floor socket with toolless lockable hinged lid. Massive construction, drivable, with lid seal. Suitable for cleaning with wet sweepers.

Dimension:	annulus Ø 140mm, box Ø 117x60mm
Supply:	2 conductor ports per Ø 20mm

Lid made of aluminum nature anodized. Other colors available by request.



8602-A | 8602-Anw

Equipment:	Item No. 8602-A	2x Schuko
	Item No. 8602-Anw1	1x Schuko 1x RJ45 double
Attachm.:	Item No. 8602	Plastic insert (screed space holder made of EPS)

Floor socket with toolless lockable hinged lid. Massive construction, drivable, with lid seal. Suitable for cleaning with wet sweepers.

Dimension:	annulus Ø 150mm, box Ø 130x68mm
Supply:	2 conductor ports per Ø 25mm

Lid made of aluminum nature anodized. Other colors available by request.





8604-A | 8603-Anw

Equipment: Item No. 8604-A 4x Schuko
 Item No. 8603-Anw1 3x Schuko, 3x RJ45 single
Attachm.: Item No. 8603 Plastic insert (screed space holder made of EPS)

Floor socket with toolless lockable hinged lid. Massive construction, drivable, with lid seal. Suitable for cleaning with wet sweepers.

Dimension: annulus Ø 220mm, box Ø 200x100mm
Supply: 2 conductor ports per Ø 25mm

Lid in anodized stainless steel look. Other colors available by request.



8701-A | 8701-Anw

Equipment: Item No. 8701-A 1x Schuko
 Item No. 8701-Anw1 1x RJ45 double

Floor socket with toolless lockable hinged lid. Massive construction, drivable, with lid seal. Suitable for cleaning with wet sweepers.

Dimension: 100x100x61mm
Supply: in front and behind each 1 conductor port per M20x1,5 mm

Lid made of aluminum nature anodized. Other colors available by request.

The floor socket also can be provided with other devices!





8702-A | 8702-Anw

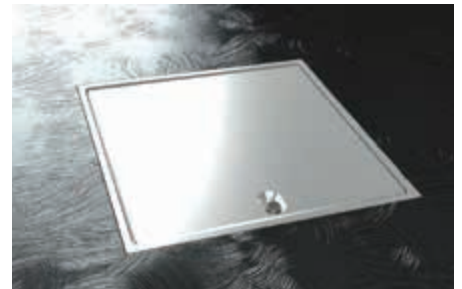
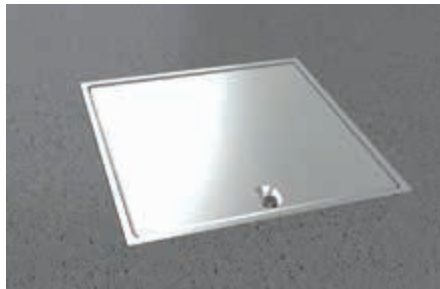
Equipment: Item No. 8702-A 2x Schuko
Item No. 8702-Anw1 1x Schuko, 1x RJ45 double

Floor socket with toolless lockable hinged lid. Massive construction, drivable, with lid seal. Suitable for cleaning with wet sweepers.

Dimension: 120x120x72mm
Supply: back 2 conductor ports per M25x1,5mm

Lid made of aluminum nature anodized. Other colors available by request.

The floor socket also can be provided with other devices!



8802-A | 8802-Anw

Equipment: Item No. 8802-A 2x Schuko
Item No. 8802-Anw1 1x Schuko, 1x RJ45 double
Item No. 8802-Anw2 1x Schuko, 1x aerial

Floor socket made of solid aluminum with lid to lay on. Lid also closes with plugged standard connectors in straight and angled shape.

Dimension: 125x125x72mm
Supply: 2 conductor ports per Ø 25mm

Lid made of aluminum nature anodized. Other colors available by request.

The floor socket also can be provided with other devices!





8802-B | 8802-Bnw

Equipment: Item No. 8802-B 2x Schuko
 Item No. 8802-Bnw1 1x Schuko, 1x RJ45 double
 Item No. 8802-Bnw2 1x Schuko, 1x aerial

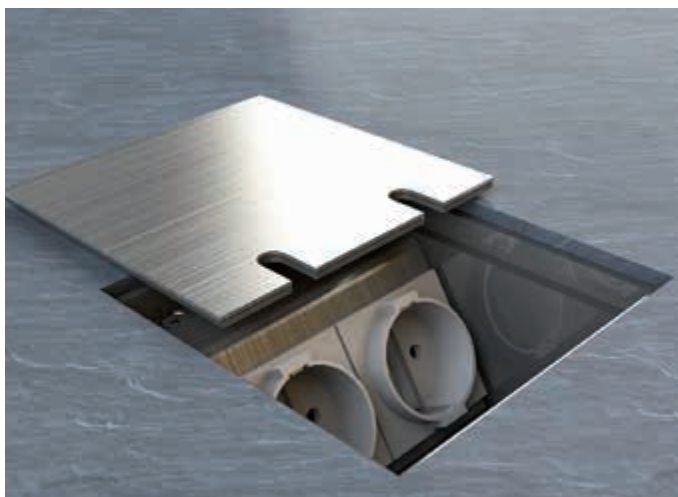
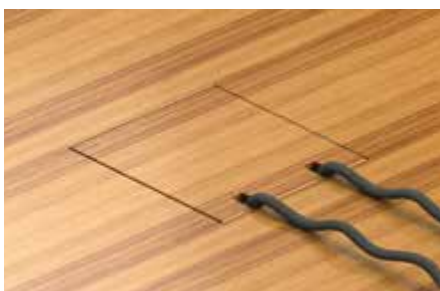
Floor socket made of solid aluminum with lid to lay on. Lid also closes with plugged standard connectors in straight and angled shape.

Dimension: 125x125x70mm

Supply: 2 conductor ports per Ø 25mm

Borderless lid to affix your own coverings.

The floor socket also can be provided with other devices!



8802-E | 8802-Enw

Equipment: Item No. 8802-E 2x Schuko
 Item No. 8802-Enw1 1x Schuko, 1x RJ45 double
 Item No. 8802-Enw2 1x Schuko, 1x aerial

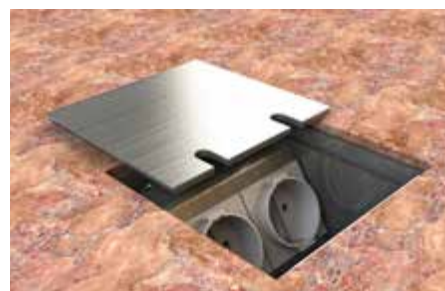
Floor socket made of solid aluminum with lid to lay on. Lid also closes with plugged standard connectors in straight and angled shape.

Dimension: 125x125x72mm

Supply: 2 conductor ports per Ø 25mm

Lid surface with 2mm grinded stainless steel!

The floor socket also can be provided with other devices!





8802-T | 8802-Tnw

Equipment:	Item No. 8802-T	2x Schuko
	Item No. 8802-Tnw1	1x Schuko, 1x RJ45 double
	Item No. 8802-Tnw2	1x Schuko, 1x aerial

Floor socket made of solid aluminum with lid to lay on. Lid also closes with plugged standard connectors in straight and angled shape.

Dimension:	135x135x76mm
Supply:	2 conductor ports per Ø 25mm

Perfect for carpet floors!

The floor socket also can be provided with other devices!



8803-B | 8803-Bnw

Equipment:	Item No. 8803-B	3x Schuko
	Item No. 8803-Bnw1	2x Schuko, 1x RJ45 double
	Item No. 8803-Bnw2	2x Schuko, 1x aerial

Floor socket made of solid aluminum with lid to lay on. Lid also closes with plugged standard connectors in straight and angled shape.

Dimension:	220x150x70mm
Supply:	4 conductor ports per Ø 25mm

Borderless lid to affix your own coverings.

The floor socket also can be provided with other devices!





8803-E | 8803-Enw

Equipment:	Item No. 8803-E	3x Schuko
	Item No. 8803-Enw1	2x Schuko, 1x RJ45 double
	Item No. 8803-Enw2	2x Schuko, 1x aerial

Floor socket made of solid aluminum with lid to lay on. Lid also closes with plugged standard connectors in straight and angled shape.

Dimension: 220x150x72mm

Supply: 4 conductor ports per Ø 25mm

Lid surface with 2mm grinded stainless steel!

The floor socket also can be provided with other devices!



8803-T | 8803-Tnw

Equipment:	Item No. 8803-T	3x Schuko
	Item No. 8803-Tnw1	2x Schuko, 1x RJ45 double
	Item No. 8803-Tnw2	2x Schuko, 1x aerial

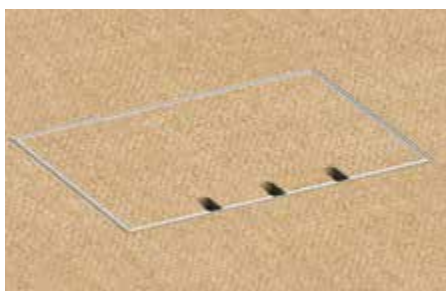
Floor socket made of solid aluminum with lid to lay on. Lid also closes with plugged standard connectors in straight and angled shape.

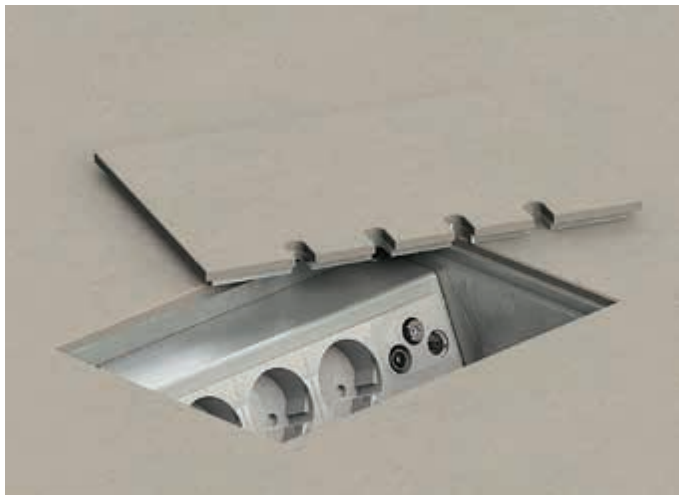
Dimension: 240x160x80mm

Supply: 4 conductor ports per Ø 25mm

Perfect for carpet floors!

The floor socket also can be provided with other devices!





8804-B | 8804-Bnw

Equipment:	Item No. 8804-B	4x Schuko
	Item No. 8804-Bnw1	3x Schuko, 1x RJ45 double
	Item No. 8804-Bnw2	3x Schuko, 1x aerial
	Item No. 8804-Bnw3	2x Schuko, 1x RJ45 double, 1x aerial

Floor socket made of solid aluminum with lid to lay on. Lid also closes with plugged standard connectors in straight and angled shape.

Dimension:	220x150x70mm
Supply:	4 conductor ports per Ø 25mm

Borderless lid to affix your own coverings.
The floor socket also can be provided with other devices!



8804-E | 8804-Enw

Equipment:	Item No. 8804-E	4x Schuko
	Item No. 8804-Enw1	3x Schuko, 1x RJ45 double
	Item No. 8804-Enw2	3x Schuko, 1x aerial
	Item No. 8804-Enw3	2x Schuko, 1x RJ45 double, 1x aerial

Floor socket made of solid aluminum with lid to lay on. Lid also closes with plugged standard connectors in straight and angled shape.

Dimension:	220x150x72mm
Supply:	4 conductor ports per Ø 25mm

Lid surface with 2mm grinded stainless steel!
The floor socket also can be provided with other devices!





8804-T | 8804-Tnw

Equipment:	Item No. 8804-T	4x Schuko
	Item No. 8804-Tnw1	3x Schuko, 1x RJ45 double
	Item No. 8804-Tnw2	3x Schuko, 1x aerial
	Item No. 8804-Tnw3	2x Schuko, 1x RJ45 double, 1x aerial

Floor socket made of solid aluminum with lid to lay on. Lid also closes with plugged standard connectors in straight and angled shape.

Dimension: 240x160x80mm
Supply: 4 conductor ports per Ø 25mm

Perfect for carpet floors!
 The floor socket also can be provided with other devices!



9901-A | 9901-Anw

Equipment:	Item No. 9901-A	1x Schuko
	Item No. 9901-Anw1	1x RJ45 double
Attachm.:	Item No. 9901	Plastic insert (screed space holder made of PVC pipe)

Floor socket made of solid cast aluminum with lid to lay on. Lid also closes with plugged standard connectors in straight and angled shape.

Dimension: annulus Ø 140mm, box Ø 120x72mm
Supply: laterally and below each 2 conductor ports per Ø 25mm

Lid made of aluminum nature anodized. It also can be filled with carpet, linoleum or other coverings.
 Possible colors: black, goldbrass etc.





9902-A | 9902-Anw

Equipment:	Item No. 9902-A	2x Schuko
	Item No. 9902-Anw1	1x Schuko, 1x RJ45 double
	Item No. 9902-Anw2	1x Schuko, 1x aerial
Attachm.:	Item No. 9902	Plastic insert (screed space holder made of EPS)

Floor socket made of solid cast aluminum with lid to lay on. Lid also closes with plugged standard connectors in straight and angled shape.

Dimension:	annulus Ø 170mm, box Ø 150x72mm
Supply:	laterally and below each 2 conductor ports per Ø 25mm

Lid made of aluminum nature anodized. It also can be filled with carpet, linoleum or other coverings.
Possible colors: black, goldbrass etc.



9902-D | 9902-Dnw

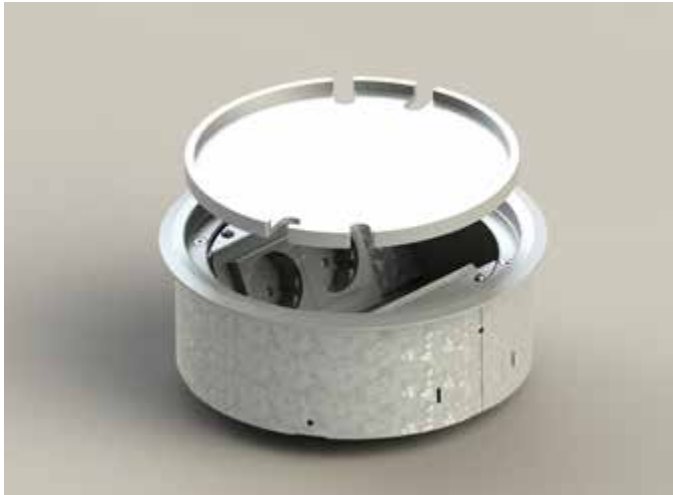
Equipment:	Item No. 9902-D	2x Schuko
	Item No. 9902-Dnw1	1x Schuko, 1x RJ45 double
	Item No. 9902-Dnw2	1x Schuko, 1x aerial
Attachm.:	Item No. 9902	Plastic insert (screed space holder made of EPS)

Floor socket made of solid cast aluminum with rotatable lid to lay on. Lid also closes with plugged standard connectors in straight and angled shape. By turning the lid, this socket is also suitable for cleaning with wet sweepers.

Dimension:	annulus Ø 170mm, box Ø 150x75mm
Supply:	laterally and below each 2 conductor ports per Ø 25mm

Lid made of aluminum nature anodized.
Possible colors: black, goldbrass etc.





9904-A | 9904-Anw

Equipment:	Item No. 9904-A	4x Schuko
	Item No. 9904-Anw1	2x Schuko 2x RJ45 double
	Item No. 9904-Anw2	2x Schuko 1x RJ45 double, 1x aerial
Attachm.:	Item No. 9904	Plastic insert (screed space holder made of EPS)

The adapter box is made of sendzimir galvanized sheet steel, annulus and lid made of solid cast aluminum with lid to lay on. Lid also closes with plugged standard connectors in straight and angled shape.

Dimension: annulus Ø 220mm, box Ø 200x80mm
Supply: laterally and below each 4 conductor ports
 per Ø 25mm

Lid made of aluminum nature anodized. It also can be filled with carpet, linoleum or other coverings.





1970D-2A

Equipment: Item No. 1970D-2A 1x Schuko

Schuko-floor socket with screw cap with or without handle for outdoor use. Single box to be set at floor level, made of saltwater resistant aluminum nature, grinded.

Massive construction, in closed state drivable and waterproof, protection class IP 67.

Dimension: 119x119x85mm

Supply: 2 conductor ports per M25 x1.5mm

Other colors available by request.



1970W-2A

Equipment: Item No. 1970W-2A 1x Schuko

Schuko-floor socket with screw cap with or without handle for outdoor use. Single box to be set at floor level, made of saltwater resistant aluminum nature, grinded.

Massive construction, in closed state drivable and waterproof, protection class IP 67.

Dimension: 119x119x88mm

Supply: 2 conductor ports per M25 x1.5mm

The integrated Tubus allows cleaning with wet sweepers in closed and open state.





7003-Anw

Equipment: Item No. 7003-Anw 2x Schuko, 1x RJ45 double

Floor socket round with lockable lid, to be set at floor level, made of saltwater resistant aluminum. Massive construction, drivable with car. In closed state waterproof, protection class IP 67.

Dimension: Ø 150x105mm

Supply: below 2 conductor ports per M25x1,5

Surface made of aluminum nature anodized. Other colors available by request.



7501-A | 7501-Anw

Equipment: Item No. 7501-A 1x Schuko
Item No. 7501-Anw1 1x Schuko, 1x RJ45 single

Floor socket round with screw cap to be set at floor level, made of gray massive PVC, massive construction. The top is made of massive aluminum and with stainless steel look anodized. In closed state waterproof, protection class IP 67.

Dimension: Ø 114x76mm

Supply: laterally 2 conductor ports per M25x1,5 mm

The floor socket also can be provided with 1x Schuko and 1x RJ45 single!





7601-A | 7602-A

Equipment:	Item No. 7601-A	1x Schuko
	Item No. 7601-Anw1	1x Schuko, 1x RJ45 single
	Item No. 7602-A	2x Schuko
	Item No. 7602-Anw1	1x Schuko, 1x RJ45 double

Floor socket rectangular with screw cap to be set at floor level, made of gray massive PVC, massive construction. The top is made of massive aluminum and with stainless steel look anodized. In closed state waterproof, protection class IP 67.

Dimension:

Item. 7601-A 100x100x76mm

Item. 7602-A 200x100x76mm

Supply: laterally 2 conductor ports per M25x1,5 mm



7701-E | 7701-M

Equipment:	Item No. 7701-E	Surface: stainless steel, 1x Schuko
	Item No. 7701-Enw1	1x RJ45 double
	Item No. 7701-M	Surface: brass, 1x Schuko
	Item No. 7701-Mnw1	1x RJ45 double

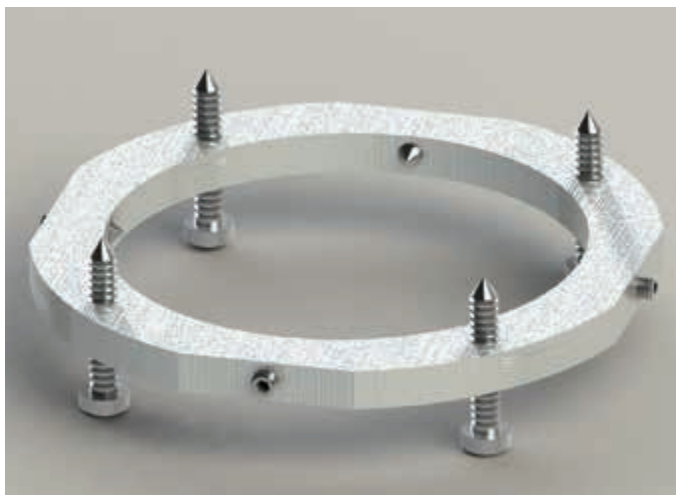
Floor socket round with screw cap to be set at floor/wall level, made of gray massive PVC, massive construction. The top is made of massive aluminum and with stainless steel look anodized. In closed state waterproof, protection class IP 67.

Dimension: Ø 90x76mm

Supply: laterally 2 conductor ports per M25x1,5 mm

Surface made of 1.5mm stainless steel/brass, grinded.



**7700 | 7703****Attachments for 7601, 7602, 7701**

Equipment: Item No. 7700 Adjustment ring
 Item No. 7703 Attachment ring

Adjustment ring made of massive aluminum applicable for mounting in wooden floors.

Attachment ring made of massive PVC, applicable for water protection in raininess.

Adjustment ring dimension: Ø 120x8mm

Attachment ring dimension: Ø 80x70mm

**7702-E**

Equipment: Item No. 7702-E 2x Schuko

Floor socket round with screw cap to be set at floor/wall level, made of gray massive PVC, massive construction. The top is made of massive aluminum and with stainless steel look anodized. In closed state waterproof, protection class IP 67.

Dimension: Ø 170x122mm

Supply: laterally 2 conductor ports per M25x1,5 mm

Surface made of 1.5mm grinded stainless steel.
 The floor socket also can be provided with other devices!



**7704-E**

Equipment: Item No. 7704-E 4x Schuko

Floor socket round with screw cap to be set at floor level, made of gray massive PVC, massive construction. The top is made of massive aluminum and with stainless steel look anodized. In closed state waterproof, protection class IP 67.

Dimension: Ø 170x122mm

Supply: laterally 2 conductor ports per M25x1,5 mm

Surface made of 1.5mm grinded stainless steel.

The floor socket also can be provided with other devices!

**7700-1 | 7706**

Attachments for 7702 and 7704

Equipment: Item No. 7700-1 Attachment ring
Item No. 7706 Adjustment ring

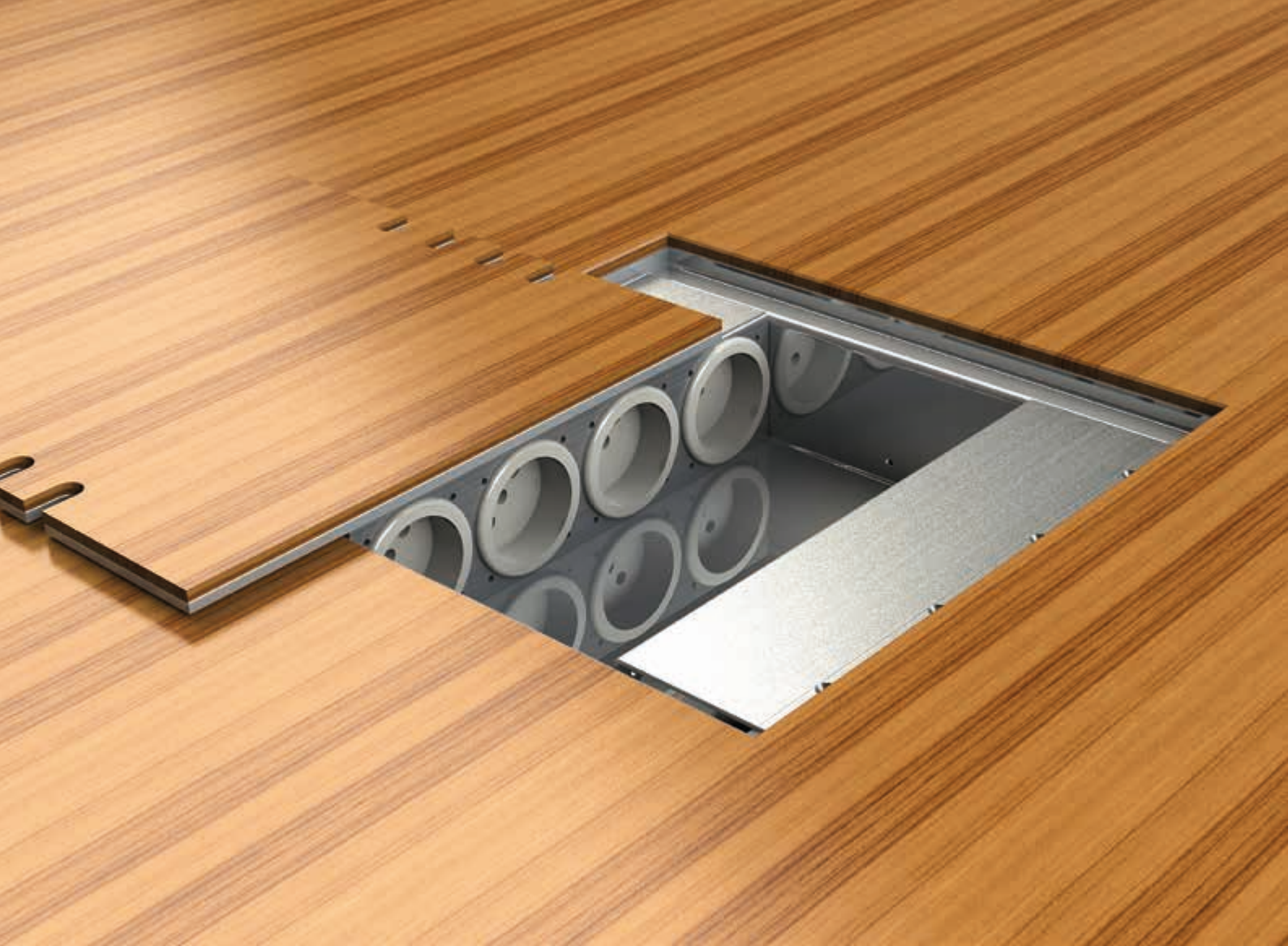
Attachment ring made of massive PVC, applicable for water protection in raininess.

Adjustment ring made of massive aluminum applicable for mounting in wooden floors.

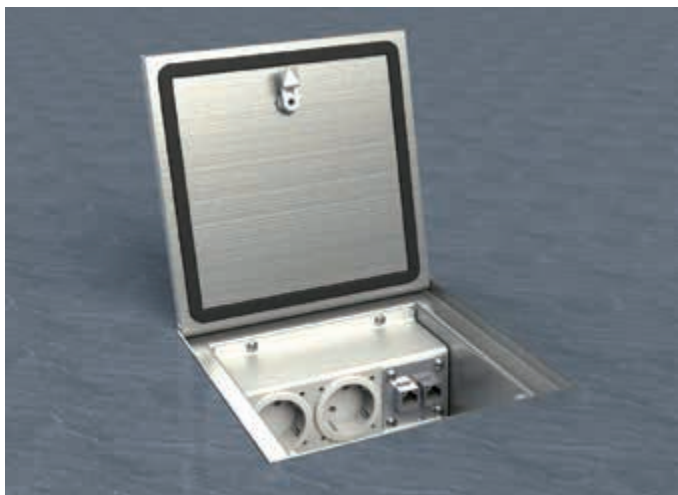
Attachment ring Dimension: Ø 170x120mm

Adjustment ring Dimension: Ø 200x8mm





Floor box systems



2003-A | 2003-Anw

Equipment: Item No. 2003-A 3x Schuko
Item No. 2003-Anw1 2x Schuko, 1x RJ45 double

The housing is made of 1.5mm V2A stainless steel and has a lockable aluminum lid. Massive construction, drivable when closed, with lid seal. Suitable for cleaning with wet sweepers.

This version is construed for loads up to 3500kg. Prerequisite is the correct installation.

The box accommodates 3 units. The sockets dispose of a VDE mark.

Dimension: 200x200x85mm

Supply: 2 conductor ports per Ø 25mm



2004-A | 2004-Anw

Equipment: Item No. 2004-A 4x Schuko
Item No. 2004-Anw1 3x Schuko, 1x RJ45 double

The housing is made of 1.5mm V2A stainless steel and has a lockable aluminum lid. Massive construction, drivable when closed, with lid seal. Suitable for cleaning with wet sweepers.

This version is construed for loads up to 3500kg. Prerequisite is the correct installation.

The box accommodates 4 units. The sockets dispose of a VDE mark.

Dimension: 250x250x90mm

Supply: 4 conductor ports per Ø 25mm



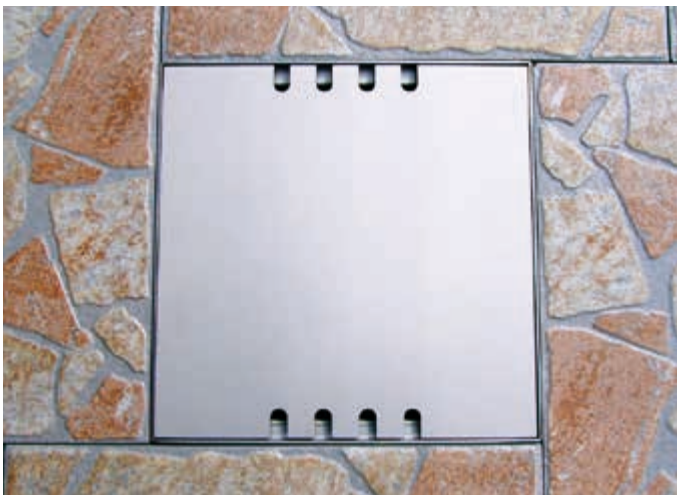


2008-A | 2008-Anw

Equipment: Item No. 2008-A 8x Schuko
Item No. 2008-Anw1 4x Schuko, 4x RJ45 double

The housing is made of 1.5mm V2A stainless steel and has a lockable aluminum lid. Massive construction, drivable when closed, with lid seal. Suitable for cleaning with wet sweepers. This version is construed for loads up to 3500kg. Prerequisite is the correct installation. The box accommodates 8 units. The sockets dispose of a VDE mark.

Dimension: 250x250x90mm
Supply: 8 conductor ports per Ø 25mm



8808-A | 8808-Anw

Equipment: Item No. 8808-A 8x Schuko
Item No. 8808-Anw1 4x Schuko, 4x RJ45 double

The square case is made of grinded stainless steel. Two carrier plates made of aluminum with 4 units per carrier plate. Other devices can be provided.

For the conductor line is use tubing, thereby it is possible to fix the box at any place in the room.

Dimension: 240x240x62mm
Supply: 8 conductor ports per Ø 20mm

Lid made of 4mm aluminum nature anodized and also closes with plugged standard connectors. Because of the low mounting depth this version is particularly suitable in old buildings.





8808-B | 8808-Bnw

Equipment: Item No. 8808-B 8x Schuko
Item No. 8808-Bnw1 4x Schuko, 4x RJ45 double

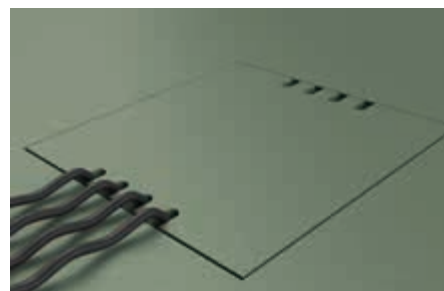
The square case is made of grinded stainless steel. Two carrier plates made of aluminum with 4 units per carrier plate. Other devices can be provided.

For the conductor line is use tubing, thereby it is possible to fix the box at any place in the room.

Dimension: 240x240x62mm

Supply: 8 conductor ports per Ø 20mm

Lid made of 4mm aluminum nature anodized, is levellable and also closes with plugged standard connectors. Borderless lid to affix your own coverings. Because of the low mounting depth this version is particularly suitable in old buildings.



8808-E | 8808-Enw

Equipment: Item No. 8808-E 8x Schuko
Item No. 8808-Enw1 4x Schuko, 4x RJ45 double

The square case is made of grinded stainless steel. Two carrier plates made of aluminum with 4 units per carrier plate. Other devices can be provided.

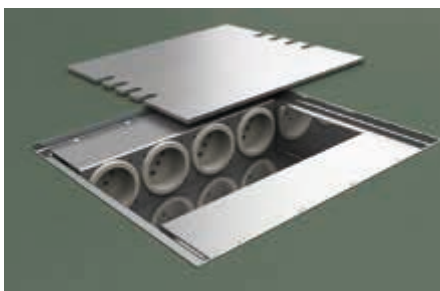
For the conductor line is use tubing, thereby it is possible to fix the box at any place in the room.

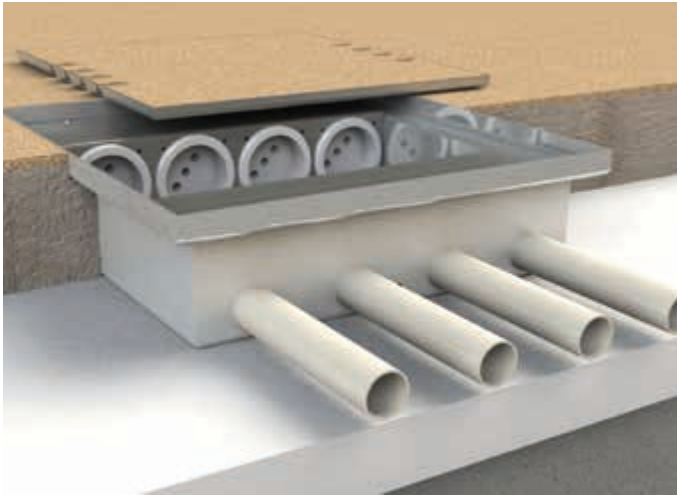
Dimension: 240x240x62mm

Supply: 8 conductor ports per Ø 20mm

Lid made of 4mm grinded stainless steel and also closes with plugged standard connectors.

Because of the low mounting depth this version is particularly suitable in old buildings.





8808-T | 8808-Tnw

Equipment: Item No. 8808-T 8x Schuko
Item No. 8808-Tnw1 4x Schuko, 4x RJ45 double

The square case is made of grinded stainless steel. Two carrier plates made of aluminum with 4 units per carrier plate. Other devices can be provided.

For the conductor line is use tubing, thereby it is possible to fix the box at any place in the room.

Dimension: 240x240x66mm
Supply: 8 conductor ports per Ø 20mm

Lid also closes with plugged standard connectors and can be filled with 5–7mm carpet, linoleum or other coverings.

Because of the low mounting depth this version is particularly suitable in old buildings.



8810-B | 8810-Bnw

Equipment: Item No. 8810-B 10x Schuko
Item No. 8810-Bnw1 5x Schuko, 5x RJ45 double

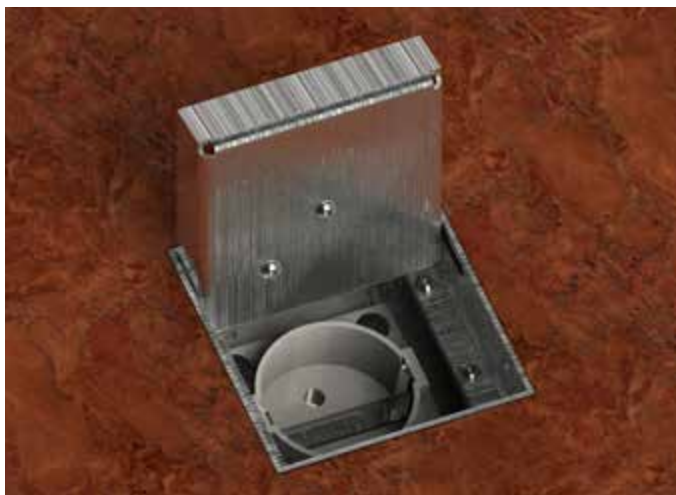
The square case is made of grinded stainless steel. Two carrier plates made of aluminum with 5 units per carrier plate. Other devices can be provided.

For the conductor line is use tubing, thereby it is possible to fix the box at any place in the room.

Dimension: 300x300x62mm
Supply: 10 conductor ports per Ø 25mm

Lid made of 4mm aluminum nature anodized, is levellable and also closes with plugged standard connectors. Borderless lid to affix your own coverings. Because of the low mounting depth this version is particularly suitable in old buildings.





8900-B

Equipment: Item No. 8900-B 1x Schuko

Compact miniature floor socket adjustable in height, 1-fold. The adapter box is made of sendzimir galvanized sheet steel. Frame and lid made of stainless steel.

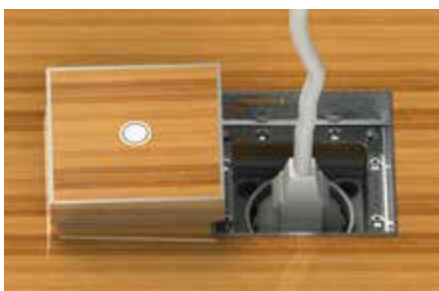
Dimension: 75x75x85mm

Level area: 20mm

Supply: all sides each Ø 25mm

With integrated magnet for easy opening of the socket.

Lid can be filled with 15mm of stone, wood, parquet or other coverings. Other Equipment by request.



8901-B | 8901-Bnw

Equipment: Item No. 8901-B 1x Schuko
Item No. 8901-Bnw1 1x RJ45 double
Item No. 8901-Bnw2 1x aerial

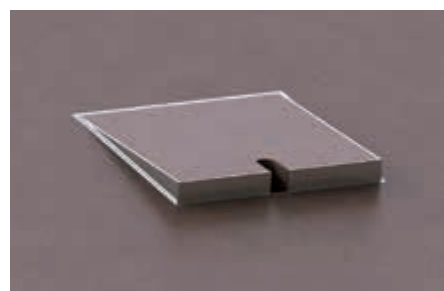
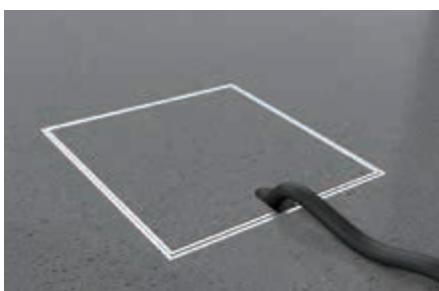
Floor socket adjustable in height, 1-fold. The adapter box is made of sendzimir galvanized sheet steel. Frame and lid made of stainless steel. Lid also closes with plugged standard connector in straight and angled shape.

Dimension: 120x120x90mm

Level area: 30mm

Supply: laterally 4x Ø 25mm and below 2x Ø 25mm

Removable hinged lid can be filled with 15mm of stone, wood, parquet or other coverings. Other Equipment by request.





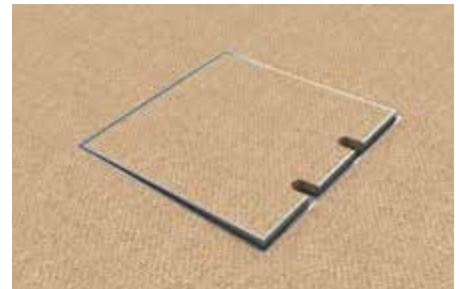
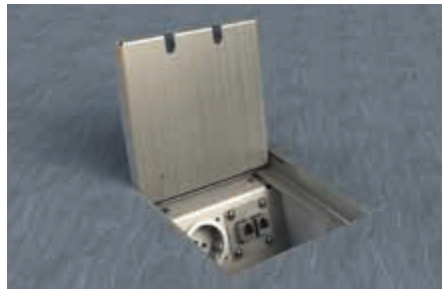
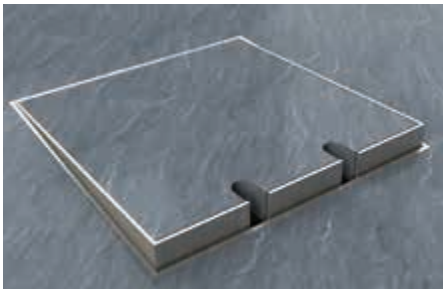
8902-B | 8902-Bnw

Equipment:	Item No. 8902-B	2x Schuko
	Item No. 8902-Bnw1	1x Schuko, 1x RJ45 double
	Item No. 8902-Bnw2	1x Schuko, 1x aerial

Floor socket adjustable in height, 2-fold. The adapter box is made of sendzimir galvanized sheet steel. Frame and lid made of stainless steel. Lid also closes with plugged standard connectors in straight and angled shape.

Dimension:	150x150x90mm
Level area:	30mm
Supply:	laterally 4x Ø 25mm and below 2x Ø 25mm

Removable hinged lid can be filled with 15mm of stone, wood, parquet or other coverings. Other Equipment by request.



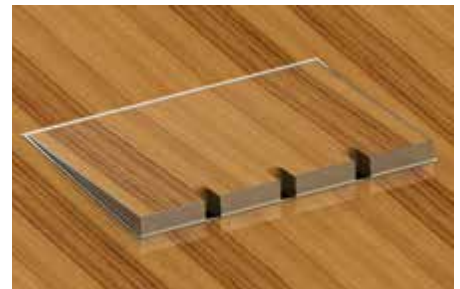
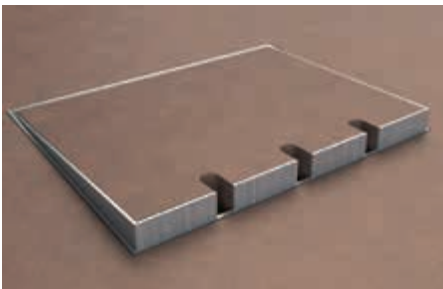
8903-B | 8903-Bnw

Equipment:	Item No. 8903-B	3x Schuko
	Item No. 8903-Bnw1	2x Schuko, 1x RJ45 double
	Item No. 8903-Bnw2	2x Schuko, 1x aerial

Floor socket adjustable in height, 3-fold. The adapter box is made of sendzimir galvanized sheet steel. Frame and lid made of stainless steel. Lid also closes with plugged standard connectors in straight and angled shape.

Dimension:	200x150x90mm
Level area:	30mm
Supply:	laterally 4x Ø 25mm and below 2x Ø 25mm

Removable hinged lid can be filled with 15mm of stone, wood, parquet or other coverings. Other Equipment by request.





8904-B | 8904-Bnw

Equipment:	Item No. 8904-B	4x Schuko
	Item No. 8904-Bnw1	3x Schuko, 1x RJ45 double
	Item No. 8904-Bnw2	3x Schuko, 1x aerial
	Item No. 8904-Bnw3	2x Schuko, 1x RJ45 double, 1x aerial

Floor socket adjustable in height, 4-fold. The adapter box is made of sendzimir galvanized sheet steel. Frame and lid made of stainless steel. Lid also closes with plugged standard connectors in straight and angled shape.

Dimension:	200x150x90mm
Level area:	30mm
Supply:	laterally 4x Ø 25mm and below 2x Ø 25mm

Removable hinged lid can be filled with 15mm of stone, wood, parquet or other coverings. Other Equipment by request.



8906-B | 8906-Bnw

Equipment:	Item No. 8906-B	6x Schuko
	Item No. 8906-Bnw1	4x Schuko, 2x RJ45 double

Floor socket adjustable in height, 6-fold. The adapter box is made of sendzimir galvanized sheet steel. Frame and lid made of stainless steel. Lid also closes with plugged standard connectors in straight and angled shape.

Dimension:	200x200x90mm
Level area:	30mm
Supply:	laterally 12x Ø 25mm and below 4x Ø 25mm

Removable hinged lid can be filled with 15mm of stone, wood, parquet or other coverings. Other Equipment by request.





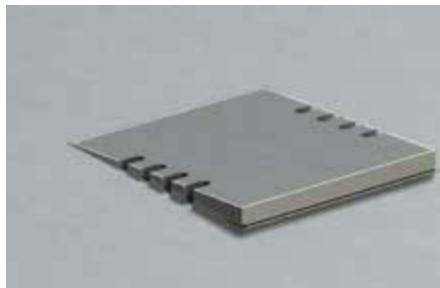
8908-B | 8908-Bnw

Equipment: Item No. 8908-B 8x Schuko
Item No. 8908-Bnw1 4x Schuko, 4x RJ45 double

Floor socket adjustable in height, 8-fold. The adapter box is made of sendzimir galvanized sheet steel. Frame and lid made of stainless steel. Lid also closes with plugged standard connectors in straight and angled shape.

Dimension: 200x200x90mm
Level area: 30mm
Supply: laterally 12x Ø 25mm and below 4x Ø 25mm

Removable hinged lid can be filled with 15mm of stone, wood, parquet or other coverings. Other Equipment by request.



89NS

Attachments for 8901 - 8908

Equipment: Item No. 89NS Leveling kit for height correction for floor boxes

Professional height correction for floor boxes. The leveling kit consists of sendzimir galvanized steel sheet. It was developed for the 89 series and can be used for models 8901 to 8908.

Dimension: 120x120x90mm
Level area: 53-153mm by 20mm steps

The delivery takes place without illustrated Floor box.





8912-B | 8912-Bnw

Equipment: Item No. 8912-B 12x Schuko
Item No. 8912-Bnw 8x Schuko, 4x RJ45 double

Floor socket adjustable in height, 12-fold. The adapter box is made of sendzimir galvanized sheet steel. Frame and lid made of stainless steel. Lid also closes with plugged standard connectors in straight and angled shape.

Dimension: 300x300x90mm
Level area: 30mm
Supply: laterally 12x Ø 25mm and below 8x Ø 25mm

Removable hinged lid can be filled with 15mm of stone, wood, parquet or other coverings. Other Equipment by request.



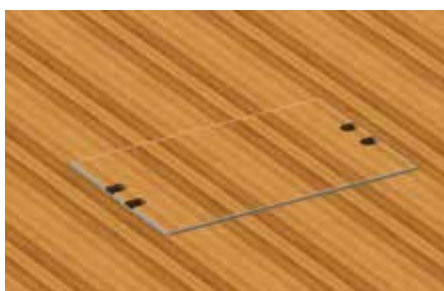
8920-B | 8920-Bnw

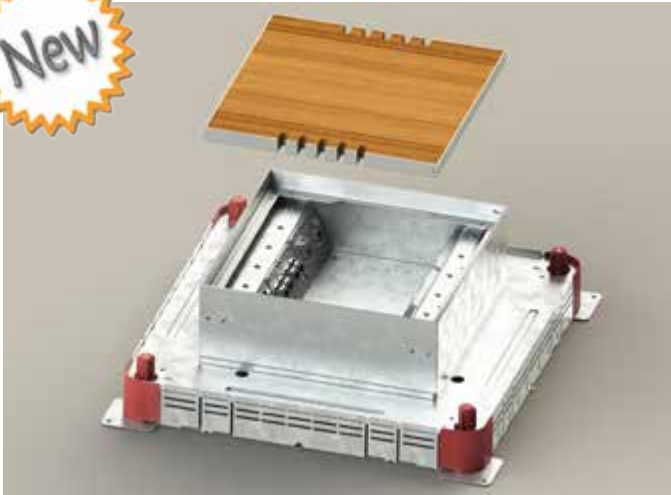
Equipment: Item No. 8920-B 20x Schuko
Item No. 8920-Bnw1 10x Schuko, 10x RJ45 double

Floor socket adjustable in height, 20-fold. The adapter box is made of sendzimir galvanized sheet steel. Frame and lid made of stainless steel. Lid also closes with plugged standard connectors in straight and angled shape.

Dimension: 500x300x90mm
Level area: 30mm
Supply: laterally 20x Ø 25mm and below 12x Ø 25mm

Removable hinged lid can be filled with 15mm of stone, wood, parquet or other coverings. Other Equipment by request.





8912-KKnw1 | KK-UD

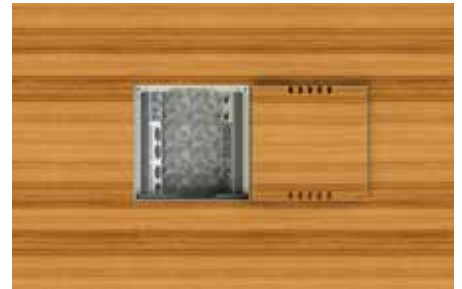
Equipment: Item No. 8912-KKnw1 8x Schuko, 4x RJ45 double
Item No. KK-UD Underfloor box, adjustable height (28-48mm), all widths

Underfloor system, adjustable in height, 12-fold. The housing of the 8912-KKnw1 is made of sendzimir galvanized sheet steel. Frame and hinged lid are made of stainless steel. Lid also closes with plugged standardconnector in straight and angled shape.

Dimension: **8912-KKnw1:** 300x300x90mm
KK-UD: 492x492x60mm

Supply: below

For additional pulling of cables the floor of the socket can be opened without affecting the connected units.





Hollow space
floor box systems



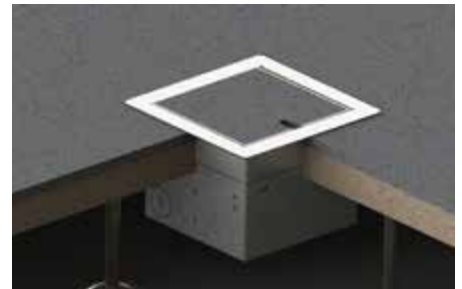
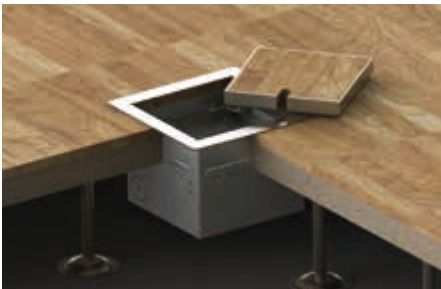
8501-B | 8501-Bnw

Equipment: Item No. 8501-B 1x Schuko
 Item No. 8501-Bnw1 1x RJ45 double
 Item No. 8501-Bnw2 1x aerial

Hollow space floor box, 1-fold. The adapter box is made of sendzimir galvanized sheet steel. Frame and lid made of stainless steel. Lid also closes with plugged standard connector in straight and angled shape.

Dimension: 150x150x90mm
Installation opening: 125x125mm
Supply: laterally 4x Ø 25mm and below 2x Ø 25mm

Removable lid can be filled with 15mm of stone, wood, parquet or other coverings.



8502-B | 8502-Bnw

Equipment: Item No. 8502-B 2x Schuko
 Item No. 8502-Bnw1 1x Schuko, 1x RJ45 double
 Item No. 8502-Bnw2 1x Schuko, 1x aerial

Hollow space floor box, 2-fold. The adapter box is made of sendzimir galvanized sheet steel. Frame and lid made of stainless steel. Lid also closes with plugged standard connectors in straight and angled shape.

Dimension: 180x180x90mm
Installation opening: 155x155mm
Supply: laterally 4x Ø 25mm and below 2x Ø 25mm

Removable lid can be filled with 15mm of stone, wood, parquet or other coverings.





8503-B | 8503-Bnw

Equipment:	Item No. 8503-B	3x Schuko
	Item No. 8503-Bnw1	2x Schuko, 1x RJ45 double
	Item No. 8503-Bnw2	2x Schuko, 1x aerial

Hollow space floor box, 3-fold. The adapter box is made of sendzimir galvanized sheet steel. Frame and lid made of stainless steel. Lid also closes with plugged standard connectors in straight and angled shape.

Dimension:	230x180x90mm
Installation opening:	205x155mm
Supply:	laterally 4x Ø 25mm and below 2x Ø 25mm

Removable lid can be filled with 15mm of stone, wood, parquet or other coverings.



8504-B | 8504-Bnw

Equipment:	Item No. 8504-B	4x Schuko
	Item No. 8504-Bnw1	3x Schuko, 1x RJ45 double
	Item No. 8504-Bnw2	3x Schuko, 1x aerial
	Item No. 8504-Bnw3	2x Schuko, 1x aerial, 1x RJ45 double

Hollow space floor box, 4-fold. The adapter box is made of sendzimir galvanized sheet steel. Frame and lid made of stainless steel. Lid also closes with plugged standard connectors in straight and angled shape.

Dimension:	230x180x90mm
Installation opening:	205x155mm
Supply:	laterally 4x Ø 25mm and below 2x Ø 25mm

Removable lid can be filled with 15mm of stone, wood, parquet or other coverings.





8506-B | 8506-Bnw

Equipment: Item No. 8506-B 6x Schuko
 Item No. 8506-Bnw1 4x Schuko, 2x RJ45 double
 Item No. 8506-Bnw2 4x Schuko, 1x aerial, 1x RJ45 double

Hollow space floor box, 6-fold. The adapter box is made of sendzimir galvanized sheet steel. Frame and lid made of stainless steel. Lid also closes with plugged standard connectors in straight and angled shape.

Dimension: 230x230x90mm
Installation opening: 205x205mm
Supply: laterally 12x Ø 25mm and below 4x Ø 25mm

Removable lid can be filled with 15mm of stone, wood, parquet or other coverings.



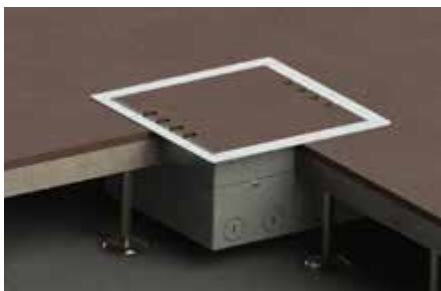
8508-B | 8508-Bnw

Equipment: Item No. 8508-B 8x Schuko
 Item No. 8508-Bnw1 4x Schuko, 4x RJ45 double

Hollow space floor box, 8-fold. The adapter box is made of sendzimir galvanized sheet steel. Frame and lid made of stainless steel. Lid also closes with plugged standard connectors in straight and angled shape.

Dimension: 230x230x90mm
Installation opening: 205x205mm
Supply: laterally 12x Ø 25mm and below 4x Ø 25mm

Removable lid can be filled with 15mm of stone, wood, parquet or other coverings.





8501-E | 8501-Enw

Equipment:	Item No. 8501-E	1x Schuko
	Item No. 8501-Enw1	1x RJ45 double
	Item No. 8501-Enw2	1x aerial

Hollow space floor box, 1-fold, made of 1.5mm grinded stainless steel with hinged lid. The adapter box is made of sendzimir galvanized sheet steel, frame and lid of stainless steel. Lid also closes with plugged standard connector in straight and angled shape.

Dimension:	150x150x90mm
Installation opening:	125x125mm
Supply:	laterally 4x Ø 25mm and below 2x Ø 25mm



8502-E | 8502-Enw

Equipment:	Item No. 8502-E	2x Schuko
	Item No. 8502-Enw1	1x Schuko, 1x RJ45 double
	Item No. 8502-Enw2	1x Schuko, 1x aerial

Hollow space floor box, 2-fold, made of 1.5mm grinded stainless steel with hinged lid. The adapter box is made of sendzimir galvanized sheet steel, frame and lid of stainless steel. Lid also closes with plugged standard connectors in straight and angled shape.

Dimension:	180x180x90mm
Installation opening:	155x155mm
Supply:	laterally 4x Ø 25mm and below 2x Ø 25mm



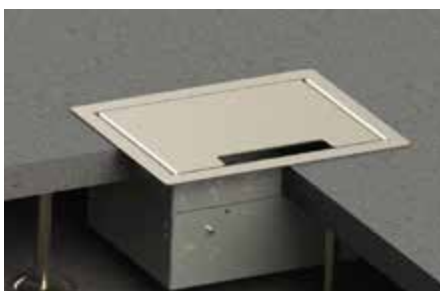


8503-E | 8503-Enw

Equipment:	Item No. 8503-E	3x Schuko
	Item No. 8503-Enw1	2x Schuko, 1x RJ45 double
	Item No. 8503-Enw2	2x Schuko, 1x aerial

Hollow space floor box, 3-fold, made of 1.5mm grinded stainless steel with hinged lid. The adapter box is made of sendzimir galvanized sheet steel, frame and lid of stainless steel. Lid also closes with plugged standard connectors in straight and angled shape.

Dimension:	230x180x90mm
Installation opening:	205x155mm
Supply:	laterally 4x Ø 25mm and below 2x Ø 25mm



8504-E | 8504-Enw

Equipment:	Item No. 8504-E	4x Schuko
	Item No. 8504-Enw1	3x Schuko, 1x RJ45 double
	Item No. 8504-Enw2	3x Schuko, 1x RJ45 aerial
	Item No. 8504-Enw3	2x Schuko, 1x aerial, 1x RJ45 double

Hollow space floor box, 4-fold, made of 1.5mm grinded stainless steel with hinged lid. The adapter box is made of sendzimir galvanized sheet steel, frame and lid of stainless steel. Lid also closes with plugged standard connectors in straight and angled shape.

Dimension:	230x180x90mm
Installation opening:	205x155mm
Supply:	laterally 4x Ø 25mm and below 2x Ø 25mm





8506-E | 8506-Enw

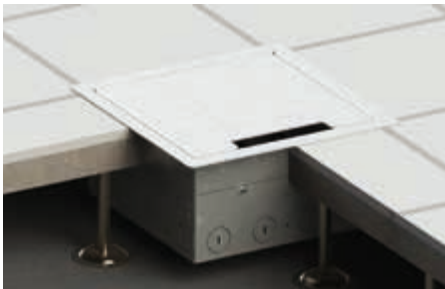
Equipment: Item No. 8506-E 6x Schuko
 Item No. 8506-Enw1 4x Schuko, 2x RJ45 double
 Item No. 8506-Enw2 4x Schuko, 1x aerial, 1x RJ45 double

Hollow space floor box, 6-fold, made of 1.5mm grinded stainless steel with hinged lid. The adapter box is made of sendzimir galvanized sheet steel, frame and lid of stainless steel. Lid also closes with plugged standard connectors in straight and angled shape.

Dimension: 230x230x90mm

Installation opening: 205x205mm

Supply: laterally 12x Ø 25mm and below 4x Ø 25mm



8508-E | 8508-Enw

Equipment: Item No. 8508-E 8x Schuko
 Item No. 8508-Enw1 4x Schuko, 4x RJ45 double

Hollow space floor box, 8-fold, made of 1.5mm grinded stainless steel with hinged lid. The adapter box is made of sendzimir galvanized sheet steel, frame and lid of stainless steel. Lid also closes with plugged standard connectors in straight and angled shape.

Dimension: 230x230x90mm

Installation opening: 205x205mm

Supply: laterally 12x Ø 25mm and below 4x Ø 25mm





8902-H | 8902-Hnw

Equipment:	Item No. 8902-H	2x Schuko
	Item No. 8902-Hnw1	1x Schuko, 1x RJ45 double
	Item No. 8902-Hnw2	1x Schuko, 1x aerial

Floor socket adjustable in height, 2-fold. The adapter box is made of sendzimir galvanized sheet steel. Frame and lid made of stainless steel. Lid also closes with plugged standard connectors in straight and angled shape.

Dimension:	150x150x90mm
Level area:	30mm
Supply:	back and below each 2x Ø 25mm

Removable hinged lid can be filled with 15mm of stone, wood, parquet or other coverings. Other Equipment by request. Especially for hollow space floors!



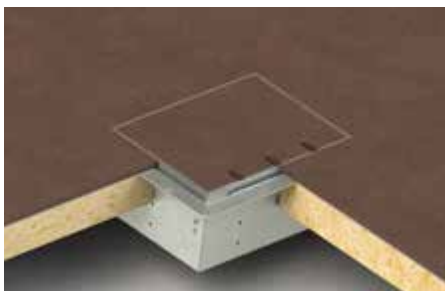
8903-H | 8903-Hnw

Equipment:	Item No. 8903-H	3x Schuko
	Item No. 8903-Hnw1	2x Schuko, 1x RJ45 double
	Item No. 8903-Hnw2	2x Schuko, 1x aerial

Floor socket adjustable in height, 3-fold. The adapter box is made of sendzimir galvanized sheet steel. Frame and lid made of stainless steel. Lid also closes with plugged standard connectors in straight and angled shape.

Dimension:	200x150x90mm
Level area:	30mm
Supply:	back and below each 2x Ø 25mm

Removable hinged lid can be filled with 15mm of stone, wood, parquet or other coverings. Other Equipment by request. Especially for hollow space floors!





8904-H | 8904-Hnw

Equipment:	Item No. 8904-H	4x Schuko
	Item No. 8904-Hnw1	3x Schuko, 1x RJ45 double
	Item No. 8904-Hnw2	3x Schuko, 1x RJ45 aerial
	Item No. 8904-Hnw3	3x Schuko, 1x aerial

Floor socket adjustable in height, 4-fold. The adapter box is made of sendzimir galvanized sheet steel. Frame and lid made of stainless steel. Lid also closes with plugged standard connectors in straight and angled shape.

Dimension:	200x150x90mm
Level area:	30mm
Supply:	back and below each 2x Ø 25mm

Removable hinged lid can be filled with 15mm of stone, wood, parquet or other coverings. Especially for hollow space floors!



8906-H | 8906-Hnw

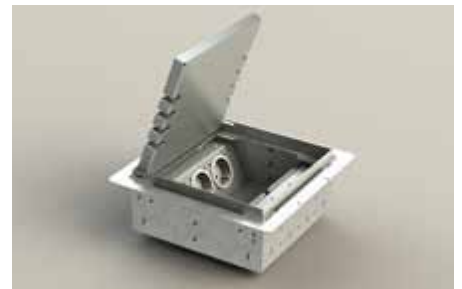
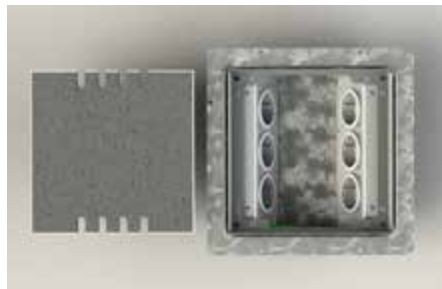
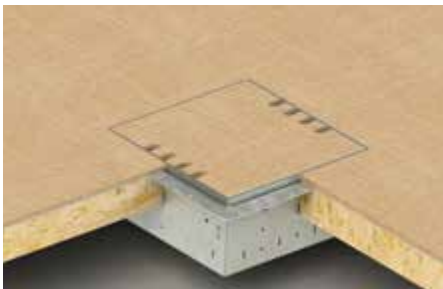
Equipment:	Item No. 8906-H	6x Schuko
	Item No. 8906-Hnw1	4x Schuko, 2x RJ45 double

Floor socket adjustable in height, 6-fold. The adapter box is made of sendzimir galvanized sheet steel. Frame and lid made of stainless steel. Lid also closes with plugged standard connectors in straight and angled shape.

Dimension:	200x200x90mm
Level area:	30mm
Supply:	back, ahead and below each 2x Ø 25mm

Removable hinged lid can be filled with 15mm of stone, wood, parquet or other coverings. Other Equipment by request.

Especially for hollow space floors!





8908-H | 8908-Hnw

Equipment: Item No. 8908-H 8x Schuko
Item No. 8908-Hnw1 4x Schuko, 4x RJ45 double

Floor socket adjustable in height, 8-fold. The adapter box is made of sendzimir galvanized sheet steel. Frame and lid made of stainless steel. Lid also closes with plugged standard connectors in straight and angled shape.

Dimension: 200x200x90mm
Level area: 30mm
Supply: back, ahead and below each 2x Ø 25mm

Removable hinged lid can be filled with 15mm of stone, wood, parquet or other coverings. Other Equipment by request.

Especially for hollow space floors!

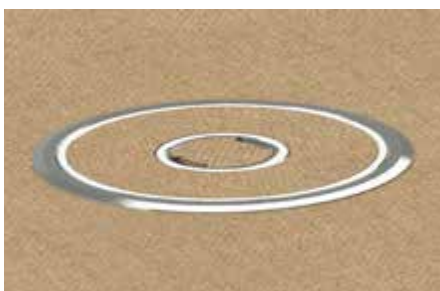


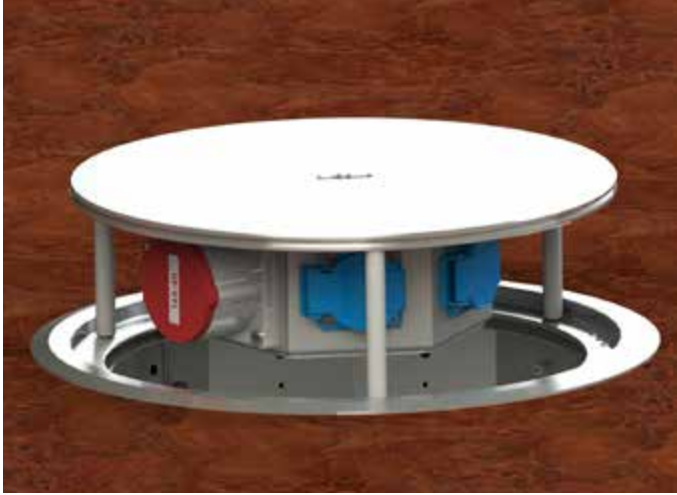
9912-T | 9912-Tnw

Equipment: Item No. 9912-T 12x Schuko
Item No. 9912-Tnw1 8x Schuko, 4x RJ45 double

Housing and lid of the hollow space floor box are made of solid cast aluminum nature anodized. Lid can be filled with 8mm carpet, linoleum or other coverings. Suitable for cleaning with wet sweepers.

Dimension: Ø 380x77mm
Supply: laterally and below



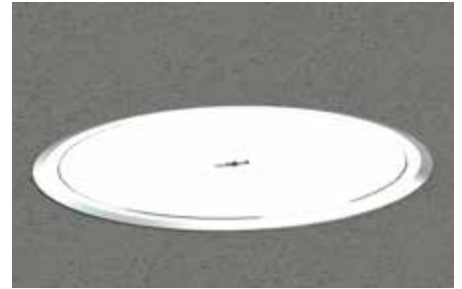
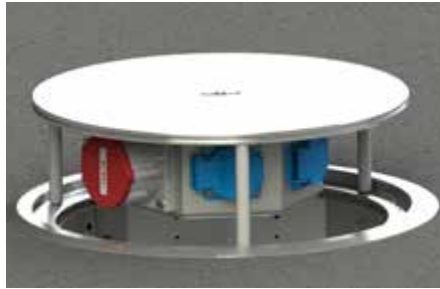
**9913-Anw**

Equipment: Item No. 9913-Anw 1x CEE 5/16A, 3x Schuko, 1x RJ45 double

The housing is made of sendzimir galvanized sheet steel, frame and lid are made of solid cast aluminum nature anodized. Suitable for cleaning with wet sweepers.

Dimension: Ø 380x107mm
Supply: laterally and below

Other colors available by request.





CEE-Floor sockets



BT-4022

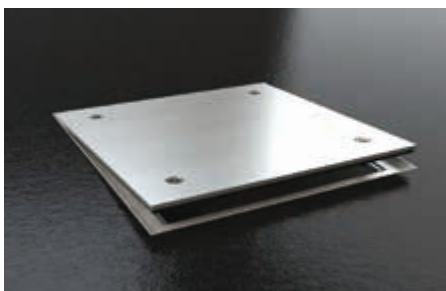
Equipment: Item No. BT-4022 1x CEE 5/16A 400V/6h,
1x CEE 5/32A 400V/6h,
2x Schuko

CEE-floor box system: the case is made of stainless steel, the lockable lid in anodized stainless steel look. For the conductor line is use tubing, thereby it is possible to fix the box at any place in the room.

In closed state waterproof, protection class IP 65.

Dimension: 400x400x116mm

Supply: 4 conductor ports per Ø 25mm



6610-A

Equipment: Item No. 6610-A1 1x CEE 5/16A 400V/6h
Item No. 6610-A2 1x CEE 5/32A 400V/6h

The case is made of stainless steel 1.4301 (3mm), the lockable carrier plate of 20mm anodized aluminum in stainless steel look, for one CEE unit. Closed, the floor box is not stormwater-tight. For outdoor use a drainage pipe is necessary for the drainage of the housing. Suitable for cleaning with wet sweepers. Massive construction, drivable by truck in case of proper installation.

Dimension: 500x250x210mm

Supply: 2 conductor ports per Ø 32mm

Other colors available by request.





7012-A

Equipment: Item No. 7012-A1 1x CEE 5/16A 400V/6h,
2x Schuko
Item No. 7012-A2 1x CEE 5/32A 400V/6h,
2x Schuko

Floor socket round with lockable lid, to be set at floor level, made of saltwater resistant aluminum. Massive construction, drivable with car. In closed state waterproof, protection class IP 67.

Dimension: Ø 200x150mm
Supply: below 2 conductor ports per M25x1,5

Surface made of aluminum nature anodized. Other colors available by request.



7012-63

Equipment: Item No. 7012-63 1x CEE 5/63A 400V/6h

Floor socket round with lockable lid, to be set at floor level, made of saltwater resistant aluminum. Massive construction, drivable with car. In closed state waterproof, protection class IP 67.

Dimension: Ø 200x218mm
Supply: below 1 conductor port per Ø 50mm

Surface made of aluminum nature anodized. Other colors available by request.





7022-A

Equipment: Item No. 7022-A 1x CEE 5/16A 400V/6h,
1x CEE 5/32A 400V/6h,
2x Schuko

Floor socket round with lockable lid, to be set at floor level, made of saltwater resistant aluminum. Massive construction, drivable with car. In closed state waterproof, protection class IP 67.

Dimension: Ø 250x150mm
Supply: below 2 conductor ports per M25x1,5

Surface made of aluminum nature anodized. Other colors available by request.



7705-E

Equipment: Item No. 7705-E1 1x CEE 5/16A 400V/6h
Item No. 7705-E2 1x CEE 5/32A 400V/6h

Floor socket round with screw cap to be set at floor level, made of gray massive PVC, massive construction. In closed state waterproof, protection class IP 67.

Dimension: Ø 170x122mm
Supply: laterally 2 conductor ports per M25x1,5

Surface made of 1.5mm grinded stainless steel.





8100-E

Equipment: Item No. 8100-E1 1x CEE 5/16A 400V/6h
Item No. 8100-E2 1x CEE 5/32A 400V/6h

The case is made of stainless steel, the carrier plate of aluminum for one CEE unit. For the conductor line is use tubing, thereby it is possible to fix the box at any place in the room.

Dimension: 400x200x150mm
Supply: 2 conductor ports per Ø 25mm

Lid also closes with plugged standard connectors.



8310-A

Equipment: Item No. 8310-A1 1x CEE 5/16A 400V/6h
Item No. 8310-A2 1x CEE 5/32A 400V/6h

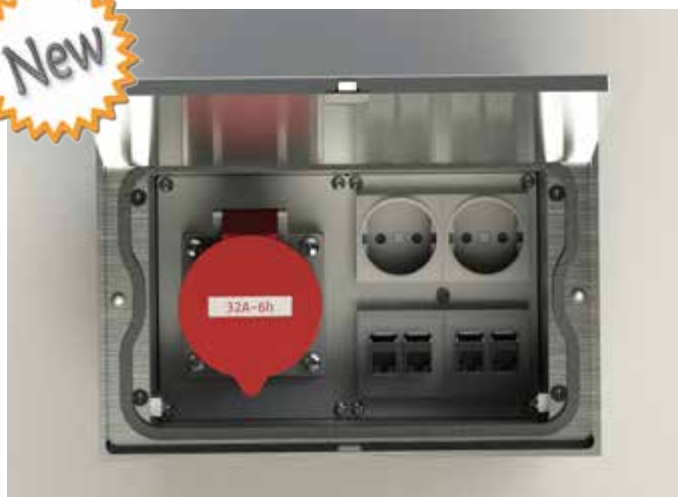
Floor socket made of solid aluminum with lockable hinged lid. Easy opening and closing of the lid by using the integrated snap lock.

Closed the floor socket is splash proof by the lid seal and thus suitable for cleaning with wet sweepers.

Dimension: 140x140x130mm
Supply: 2 conductor ports per Ø 25mm

Frame and lids surface made of aluminum nature anodized. Other colors available by request.





8314-Anw

Equipment: Item No. 8314-Anw1 1x CEE 5/16A 400V/6h,
2x Schuko, 2x RJ45 double
Item No. 8314-Anw2 1x CEE 5/32A 400V/6h,
2x Schuko, 2x RJ45 double

Floor socket made of solid aluminum with lockable hinged lid. Easy opening and closing of the lid by using the integrated snap lock.

Closed the floor socket is splash proof by the lid seal and thus suitable for cleaning with wet sweepers.

Dimension: 250x160x131mm

Supply: 4 conductor ports per Ø 25mm

Frame and lids surface made of aluminum nature anodized. Other colors available by request.



H21

Equipment: Item No. H21 1x CEE 5/16A 400V/6h

CEE-floor socket/harbor socket. Single box to be set at floor level, made of saltwater resistant aluminum. Massive construction, drivable and lockable.

With captive and screwable lid without handle for outdoor use. to be set at floor level, made of saltwater resistant aluminum. Massive construction and drivable.

Dimension: 170x170x170mm

Supply: 2 conductor ports per M32x1.5mm

In closed and opened state waterproof, protection class IP 67. Surface made of grinded aluminum nature.



**H21-532**

Equipment: Item No. H21-532 1x machine box 5/32A with CEE-coupling

CEE-floor socket/harbor socket. Single box to be set at floor level, made of saltwater resistant aluminum. Massive construction, drivable and lockable.

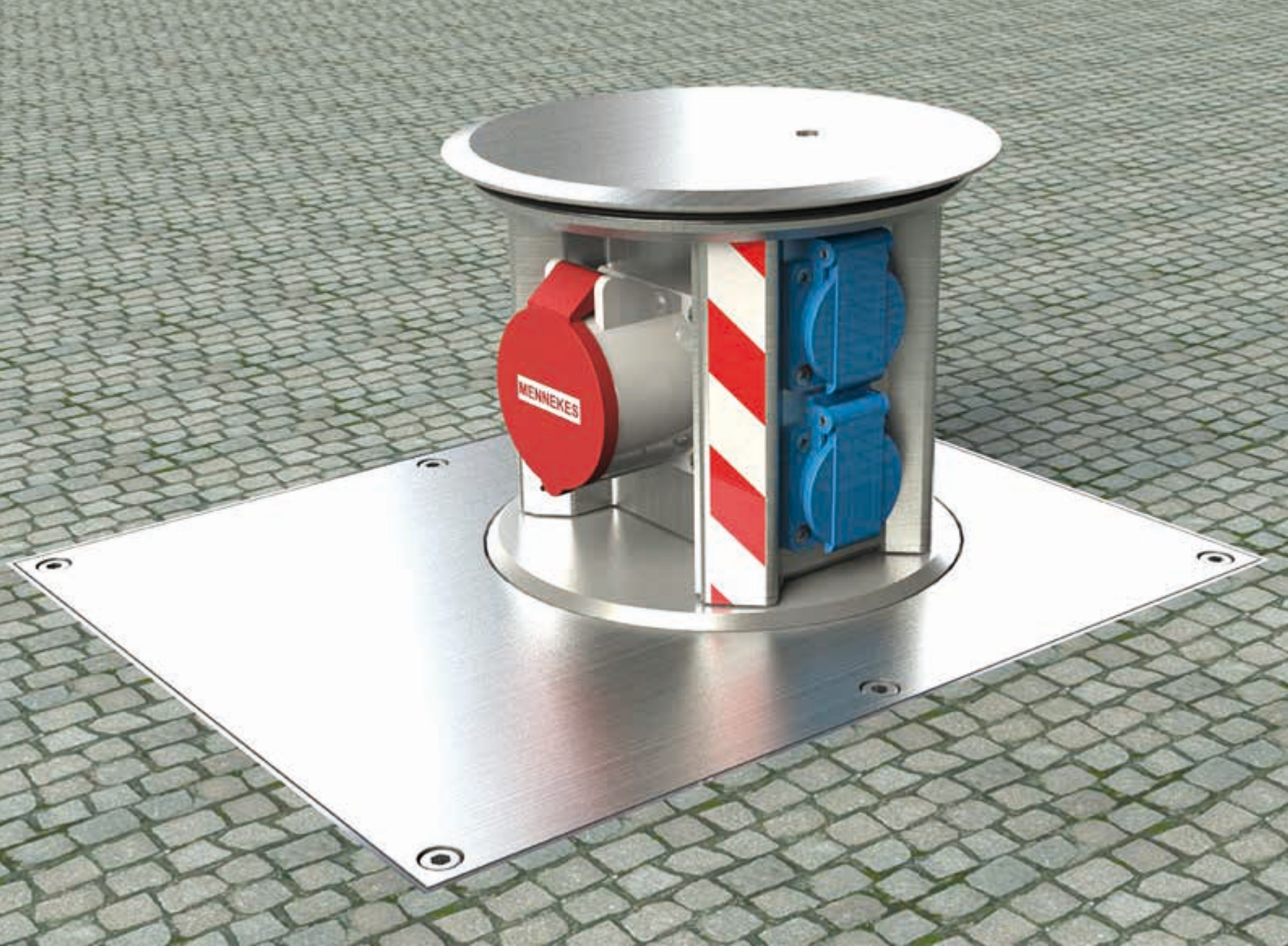
With captive and screwable lid without handle for outdoor use. to be set at floor level, made of saltwater resistant aluminum. Massive construction and drivable.

Dimension: 170x170x170mm

Supply: 2 conductor ports per M32x1.5mm

In closed and opened state waterproof, protection class IP 67.
Surface made of grinded aluminum nature.





Retractable supply posts



SV-008 | SV-016 | SV-106

Equipment:	Item No. SV-008	8x Schuko
	Item No. SV-016	1x CEE 5/16A 400V/6h, 6x Schuko
	Item No. SV-106	1x CEE 5/32A 400V/6h, 6x Schuko

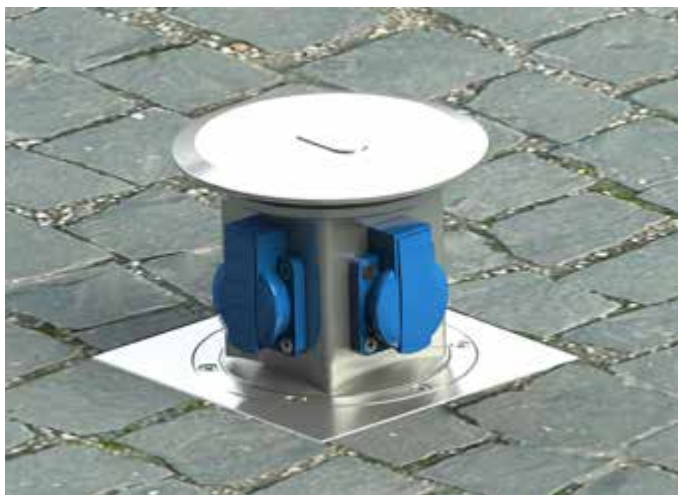
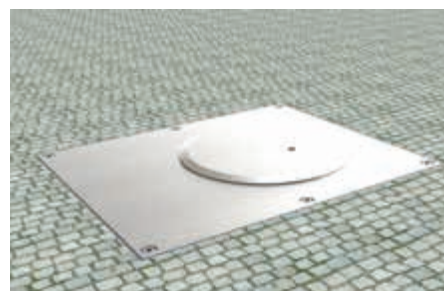
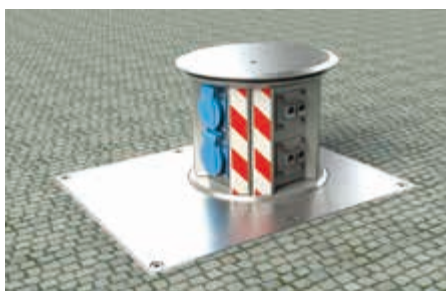
Retractable supply post made of saltwater resistant aluminum, drivable by truck. Surface made of anodized stainless steel look, protection class IP 55 / IP 54, for outdoor use.

8x isolated ground receptacle with hinged lid, protection class IP 54 (unfused, without wiring). Housing in closed and opened state waterproof.

Dimension: 450x350x251mm

Supply: laterally 2x Ø 25mm und 2x Ø 32mm

Other devices by request.



1990-2B

Equipment:	Item No. 1990-2B	4x Schuko
-------------------	------------------	-----------

Micro-Retractable supply post, protection class IP 67 / IP 54, for outdoor use. Made of saltwater resistant aluminum, drivable by car. Surface made of aluminum nature. Extend and pull in with special key.

4x isolated ground receptacle with hinged lid, protection class IP 54 (unfused, without wiring). Housing in closed and opened state waterproof.

Dimension: 170x170x170mm

Supply: 4 conductor ports per M32x1.5mm





1990-3B

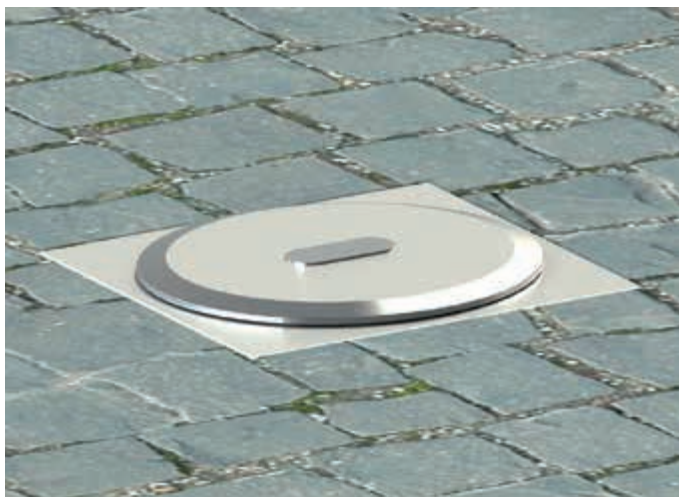
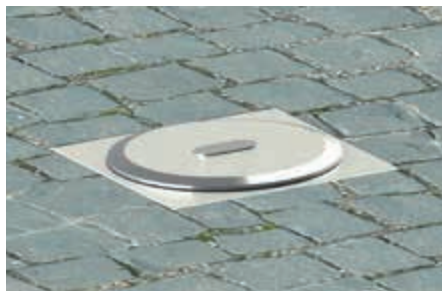
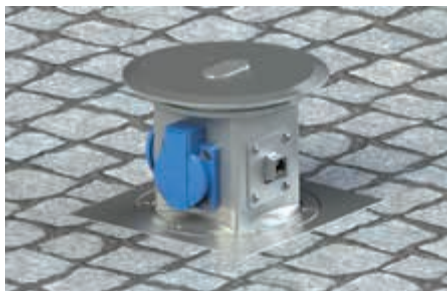
Equipment: Item No. 1990-3B 1x RJ45 single, 3x Schuko

Micro-Retractable supply post, protection class IP 67 / IP 54, for outdoor use. Made of saltwater resistant aluminum, drivable by car. Surface made of aluminum nature. Extend and pull in with special key.

1x RJ45 single and 3x isolated ground receptacle with hinged lid, protection class IP 54 (unfused, without wiring). Housing in closed and opened state waterproof.

Dimension: 170x170x170mm

Supply: 4 conductor ports per M32x1.5mm



1990-4B

Equipment: Item No. 1990-4B 1x machine box, 3x Schuko

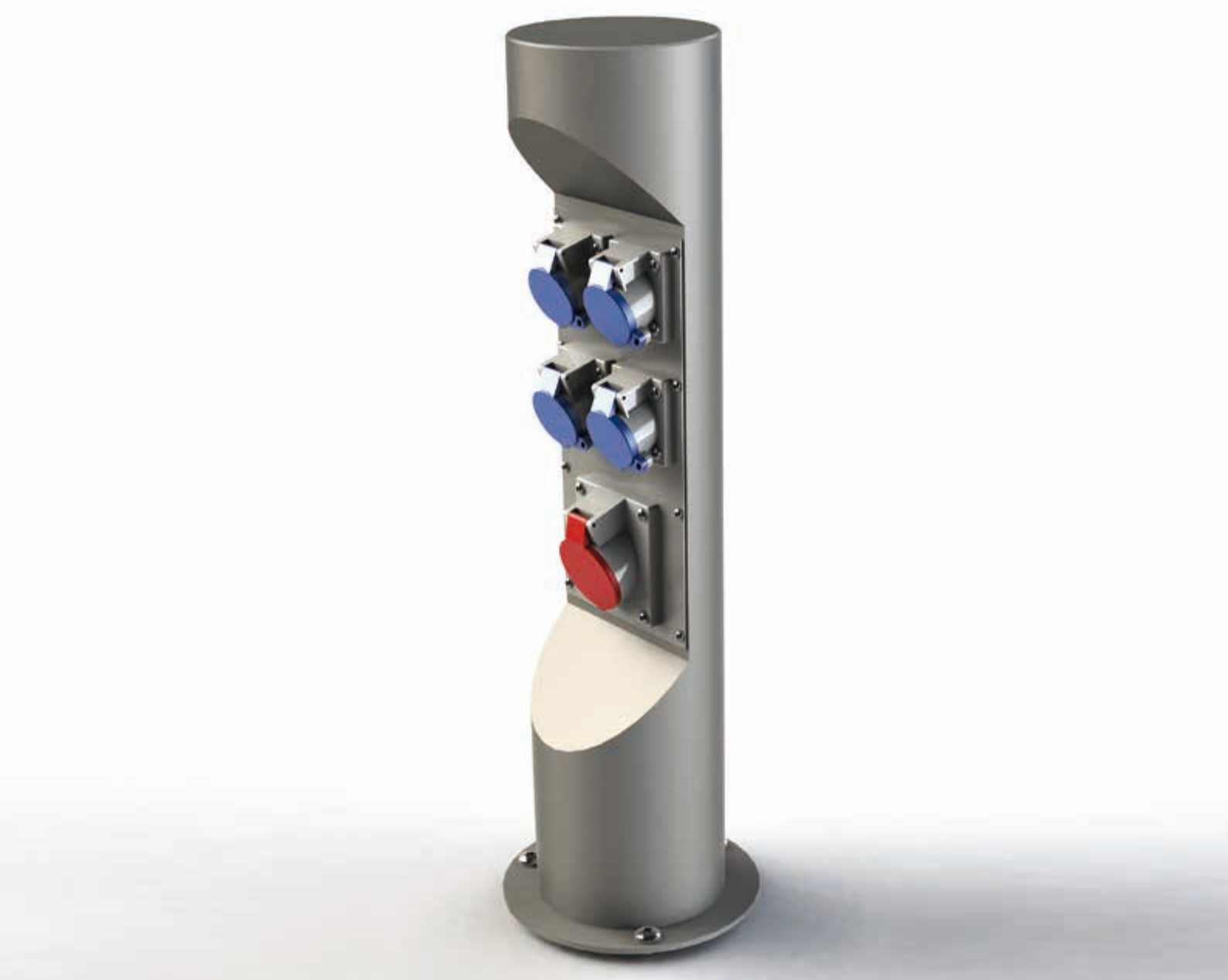
Micro-Retractable supply post, protection class IP 67 / IP 54, for outdoor use. Made of saltwater resistant aluminum, drivable by car. Surface made of aluminum nature. Extend and pull in with special key.

1x machine box 5/16A with CEE-coupling 5/16A 400V, 3x isolated ground receptacle with hinged lid, protection class IP 54 (unfused, without wiring). Housing in closed and opened state waterproof.

Dimension: 170x170x170mm

Supply: 4 conductor ports per M32x1.5mm





Energy columns



ES-04-LED

Equipment: Item No. ES-04-LED 2x Schuko,
2x CEE 3/16A 230V/6h,
1x LED around light

Energy column, to be placed on prepared foundation for outdoor use. Housing is made of V2A stainless steel, glass bead blasted, carrier plate of PVC-U, without wiring. Lid in anodized stainless steel look. Protection class IP 54.

LED around light with sensor-controlled and dimmed twilight switch, twilight value adjustable.

Dimension: Ø 150x450mm
Supply: below

Devices by customer specification.



ES-4

Equipment: Item No. ES-4 2x Schuko,
2x CEE 3/16A 230V/6h

Energy column, to be placed on prepared foundation for outdoor use. Housing is made of V2A stainless steel, glass bead blasted, carrier plate of PVC-U, without wiring. Protection class IP 54.

LED around light with sensor-controlled and dimmed twilight switch, twilight value adjustable.

Dimension: Ø 150x450mm
Supply: below

Devices by customer specification.





ES-14

Equipment: Item No. ES-14 1x CEE 5/16A 400V/6h,
4x CEE 3/16A 230V/6h

Energy column, to be placed on prepared foundation for outdoor use. Housing is made of V2A stainless steel, glass bead blasted, carrier plate of PVC-U, without wiring. Protection class IP 54.

Dimension: Ø 154x700mm
Supply: below

Devices by customer specification.



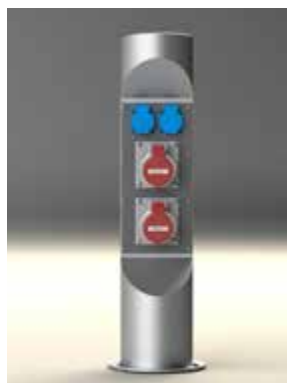
ES-22

Equipment: Item No. ES-22 2x CEE 5/16A 400V/6h,
2x Schuko

Energy column, to be placed on prepared foundation for outdoor use. Housing is made of V2A stainless steel, glass bead blasted, carrier plate of PVC-U, without wiring. Protection class IP 54.

Dimension: Ø 154x700mm
Supply: below

Devices by customer specification.





ES-250

Equipment: Item No. ES-250 4x Schuko,
4x CEE 5/16A 400V/6h

Energy column, to be placed on prepared foundation for outdoor use. Housing is made of V2A stainless steel, glass bead blasted, carrier plate of PVC-U, completely wired. Protection class IP 54.

Dimension: Ø 254x1000mm
Supply: below

Devices by customer specification.



ESC-004-LED

Equipment: Item No. ESC-004-LED 4x CEE 3/16A 230V/6h,
4x FI/LS 2/16/0,03A,
1x LED around light

Energy column for campsites, to be placed on prepared foundation for outdoor use. Housing is made of V2A stainless steel, glass bead blasted, carrier plate of PVC-U, without wiring. Protection class IP 54.

LED around light with sensor-controlled and dimmed twilight switch, twilight value adjustable.

Dimension: Ø 154x1200mm
Supply: below

Devices by customer specification.

**ESP-24**

Equipment: Item No. ESP-24 1x CEE 5/32A,
1x CEE 5/16A,
4x Schuko

Energy column, to be placed on prepared foundation for outdoor use. Housing is made of V2A stainless steel, glass bead blasted. Sockets integrated in plastic housing, protected by RCBO. Lockable via semi-cylinder. Protection class IP 54.

Dimension: Ø 400x1000mm
Supply: below

On request, coating in RAL colors possible!
Optional LED around light selectable.

Devices by customer specification.

**EST-24**

Equipment: Item No. EST-24 1x CEE 5/32A,
1x CEE 5/16A,
4x Schuko

Energy column, to be placed on prepared foundation for outdoor use. Housing is made of V2A grindet stainless steel. Sockets integrated in plastic housing, protected by RCBO. Lockable via semi-cylinder.
Protection class IP 54.

Dimension: 440x300x1000mm
Supply: below

On request, coating in RAL colors possible!
Optional interior lighting selectable.

Devices by customer specification.

**ES-2 | ES-1S**

Equipment: Item No. ES-2 2x Schuko
Item No. ES-1S 1x Schuko, 1x lighth switch

Energy column 2-fold, splash proof. Protection class IP 54.
Housing and lid made of glass bead blasted stainless steel, for outdoor use. The sockets dispose of a VDE mark.

Dimension: Ø 130x230mm
Supply: below 2x Ø 25mm





Wall sockets/Wall distributors



5501-A | 5501-Anw

Equipment: Item No. 5501-A 1x Schuko
Item No. 5501-Anw 1x RJ45 double

Wall socket 1-fold with lockable lid, splash proof. Protection class IP 44.

The adapter box is made of sendzimir galvanized sheet steel, frame and lid of solid cast aluminum nature anodized.

Dimension: 86x98x9mm

Installation opening: 78x90x50mm

Supply: top, laterally and back each 2x Ø 25mm

Other colors available by request.



5503-A | 5503-Anw

Equipment: Item No. 5503-A 3x Schuko
Item No. 5503-Anw1 2x Schuko, 1x RJ45 double

Wall distributor 3-fold, splash proof. Protection class IP 54.

The adapter box is made of sendzimir galvanized sheet steel, frame and lid of solid cast aluminum nature anodized. Lid also closes with plugged standard connectors in straight and angled shape.

Dimension: 200x200x82mm

Installation opening: 180x180mm

Supply: back and top each 2x Ø 25mm

Other colors available by request.





5510-E

Equipment: Item No. 5510-E1 1x CEE 5/16A 400V/6h
Item No. 5510-E2 1x CEE 5/32A 400V/6h

CEE-Wall socket 1-fold, waterproof. Protection class IP 67. The housing is made of V4A, for screwing to the wall. It can be used both indoors and outdoors.

Dimension: 320x150x130mm
Supply: backside through opening of 100x100mm

Excellent for use in gastronomie and in saline environments.



5511-A

Equipment: Item No. 5511-A 1x CEE 5/16A 400V/6h,
1x Schuko

Wall distributor 2-fold, splash proof. Protection class IP 54. The adapter box is made of sendzimir galvanized sheet steel, frame and lid of solid cast aluminum in anodized stainless steel look. Lid also closes with plugged standard connectors in straight and angled shape.

Dimension: 350x200x100mm
Installation opening: 330x180mm
Supply: back and top each je 2x Ø 25mm

Other colors available by request.





5523-A

Equipment: Item No. 5523-A 1x CEE 5/16A 400V/6h,
1x CEE 5/32A 400V/6h,
3x Schuko

Wall distributor 5-fold, splash proof. Protection class IP 54. The adapter box is made of sendzimir galvanized sheet steel, frame and lid of solid cast aluminum nature anodized. Lid also closes with plugged standard connectors in straight and angled shape.

Dimension: 400x400x140mm
Installation opening: 380x380mm
Supply: back and top each 2x Ø 25mm

Other colors available by request.



5602-E

Equipment: Item No. 5602-E 2x Schuko

Wall socket 2-fold, whole housing is made of V2A. Lid with keyed cam lock, not keyed alike. Lid also closes with plugged standard connectors in straight and angled shape. Splash proof in closed state, protection class IP 40.

Dimension: 120x140x100mm
Supply: back 1x oval, top 1x Ø 25mm

Especially for washing machine rooms. Other equipment by request!



[GO TO PRODUCT FINDER](#)

1. SCOPE

1.1 These general terms and conditions are content of the contract between vendor (Bodensteckdosen Systemtechnik) and customer.

1.2 Deviations of these general terms and conditions or specific conditions as well as instructions and variant drawings, styles and similar documents compel the vendor only if he noticed them explicitly and in writing and accepted them.

1.3 These general terms and conditions remain mandatory even if individual parts should not be effective for some reason.

1.4 General terms and conditions of the customer or a third party which differ from these general terms and conditions or special agreements are not mandatory for the vendor even if the customer refers to it and the vendor did not explicitly disagree in individual cases.

1.5 These conditions apply in ongoing business connections also for future dealings even if they do not explicitly refer to them

2. OFFER AND ORDER TAKING

If the customer announces his cancellation of the contract before the implementation of assembly of the object of purchase, the vendor is entitled to demand 10% of the order value as cancellation charge instead of his entitlement to compliance. Independently, the vendor can demand contractual performance.

3. PRICES

3.1 The prices apply in case of doubt ex works solely cargo, customs, import taxes and packaging plus value-added tax to the statutory amount.

3.2 The prices are to be understood basically in the stated currency in the contract notes and bills.

3.3 If not agreed differently, the vendor reserves price hikes according to partial additional cost in the case of all general changes in the economic conditions, especially in cases of wage increases, price rises for primary materials and auxiliary material, taxes, charges for transport as well as currency draft.

3.4 In the case of add on sales, the vendor is not bound to previous prices.

4. INTELLECTUAL PROPERTY RIGHTS

4.1 Sales records like drafts, drawings and movies provided by the vendor remain in the vendor's property even if partial costs are compensated for this purpose.

4.2 The vendor reserves his exploitation rights abundantly in terms of ownership rights and copyright for estimates, drawings and other documents. The documents may only be made available to third parties if the vendor agrees previously and must be handed back immediately if the order was not entered by the vendor. The sentences 1 and 2 apply accordingly to the customer's documents. These may be made available to such third parties which the vendor permissibly transferred deliveries.

5. DELIVERY

5.1 The delivery takes place on the customer's hazard and bill even if the vendor bears the entire or partial charges for transport.

5.2 The delivery period starts after the receipt of all documents which are necessary for the performance of the order entered by the customer and/or the deposit if agreed.

5.3 Delivery times can only be named approximately.

5.4 In the case of changing the order subsequently, the vendor is no longer bound to the originally agreed and confirmed delivery times.

5.5 In the case of force majeure like natural catastrophes etc., public sector measures, shortage of material, breakdowns, traffic problems, strike, lock-out and und other interruption of business, the vendor has the option to extend the agreed delivery deadline appropriately or to withdraw from the contract.

5.6 Any compensation for damages cannot be deduced from the violation of delivery deadlines.

5.7 Orders on call must be picked up during the agreed period. Lots which have not

been picked up will be charged and become due for payment immediately after the expiration of a deadline.

5.8 In the case of call orders without agreement of duration, production lot sizes and acceptance dates the vendor is allowed to demand a mandatory determination about this by no later than three months after order confirmation. If the customer does not fulfill this demand within three weeks, the vendor is entitled to set a grace period and to withdraw from the contract and/or claim compensation for damages after its expiration.

5.9 Our obligation to deliver rests as long as the customer is in arrears with a liability.

6. PACKAGING / SHIPPING

6.1 If not agreed otherwise, the vendor chooses packaging, shipping method and transport route.

6.2 Particular, not customary packing will be brought to account.

6.3 When requested in writing by the customer the goods will be insured at cost to the customer for the risk coverage requested.

7. RESERVATION OF PROPERTY RIGHTS

7.1 Deliveries remain the property of the supplier until all claims of the supplier on the customer have been met, even when the purchase price for specially marked claims has been met. For account customers the reserved property rights to the delivered goods (reserved ownership of goods) are in force as security for the supplier until the balance has been paid in full. If payments are made by means of a bill of exchange, then reserved ownership is not transferred until the bill of exchange has been cleared.

7.2 Further processing or treatment of goods supplied by the customer may only be carried out by excluding the ownership rights of the customer according to § 950 BGB (Common Law Code) as contracted by the supplier. The supplier becomes co-owner of the thus produced goods to the proportional value of the net sale price to the net post manufacturing processed cost of the thus produced goods, which serve as reserved ownership goods to secure the property claims of the supplier as per clause 1.

7.3 For further processing by the customer (in combination or addition) with other goods not owned by the supplier, § 947, 948 BGB (Common Law Code) are applicable, resulting in proportional co-ownership by the supplier in the resulting goods, which are now considered reserved ownership goods.

7.4 The re-sale of reserved ownership goods by the customer is only permissible as part of normal commercial practice and on condition that the customer reaches an agreement with the supplier regarding reserved ownership goods as defined in clauses 1 to 3. The customer is not entitled to take any other action in respect of reserved ownership goods, in particular pawning, or using the goods as security.

7.5 The customer relinquishes herewith already now all claims to the supplier, which may result from the re-sale of goods and all other justifiable claims, including associated rights to his customers. The customer is duty-bound upon request to inform the supplier immediately and supply all necessary documentation to secure the rights of the supplier against the customers of the customer.

8. WARRANTY

Claims of defects must be imposed immediately, latest one week after the receipt of the goods at its destination, by written form with a defect reason, presentation of the corresponding examination sample as well as definite fixing of the supplying charge by giving the number of delivery note or bill.

9. PAYMENT

9.1 All payments are to be exclusively made to the vendor in EURO.

9.2 The purchaser is in arrears without reminder if it takes more time than the time allowed for any payment. Subject to other rights, the vendor is entitled to demand interest for default in the amount of 5% above the relevant base interest rate of the European Central Bank.

10. RIGHT TO WITHDRAW

Events that drastically change, wholly or in part, the implicit basis of the sale contract, whether they may affect the customer or the vendor or his suppliers, shall entitle the vendor to adapt, wholly or in part, the contract to the changed conditions, excluding claims for damages

11. GENERAL LIMITATION OF LIABILITY

In all cases deviating from above-mentioned terms in which the vendor is under the obligation of compensation for damages or expenses because of contractual or legal claims, the vendor is liable only insofar as he, his executives or persons employed in performing an obligation for the vendor can be charged with intent, gross negligence or critical or physical injury or impairment of health. Liability independent of fault according to the product liability law as well as liability for fulfillment of a quality warranty is not affected. Liability for culpable breach of essential contractual obligations is not affected either; liability is, however, limited to the foreseeable

damage arising from this type of contract except for the cases in S 1. Shifting the burden of proof to the disadvantage of the customer is not connected with the regulations above.

12. PLACE OF PERFORMANCE, APPLICABLE LAW AND JURISDICTION

12.1 By placing an order the customer declares its acceptance of these terms and conditions to their full extend. Own business conditions of the customer standing contrary or differing are invalid even if we do not contradict them. Other spoken agreements are only valid if they are confirmed by written form.

12.2 Place of performance and jurisdiction depend exclusively on the base or the place of the vendor's management. However, the vendor is entitled to choose to claim also at the place of his branch or at the customer's place of residence.

Version of January 2017

1206.....	6	8701-A 8701-Anw.....	12
1970D-2A.....	21	8702-A 8702-Anw.....	13
1970W-2A.....	21	8802-A 8802-Anw.....	13
1990-2B.....	60	8802-B 8802-Bnw.....	14
1990-3B.....	61	8802-E 8802-Enw.....	14
1990-4B.....	61	8802-T 8802-Tnw.....	15
2003-A 2003-Anw.....	28	8803-B 8803-Bnw.....	15
2004-A 2004-Anw.....	28	8803-E 8803-Enw.....	16
2008-A 2008-Anw.....	29	8803-T 8803-Tnw.....	16
2290-2A.....	6	8804-B 8804-Bnw.....	17
2295-2A.....	7	8804-E 8804-Enw.....	17
3301-E 3301-Enw.....	7	8804-T 8804-Tnw.....	18
3302-E 3302-Enw.....	8	8808-A 8808-Anw.....	29
3303-E 3303-Enw.....	8	8808-B 8808-Bnw.....	30
4402-E 4402-Enw.....	9	8808-E 8808-Enw.....	30
4403-E 4403-Enw.....	9	8808-T 8808-Tnw.....	31
5501-A 5501-Anw.....	70	8810-B 8810-Bnw.....	31
5503-A 5503-Anw.....	70	8900-B.....	32
5510-E.....	71	8901-B 8901-Bnw.....	32
5511-A.....	71	8902-B 8902-Bnw.....	33
5523-A.....	72	8902-H 8902-Hnw.....	46
5602-E.....	72	8903-B 8903-Bnw.....	33
6610-A.....	52	8903-H 8903-Hnw.....	46
7003-Anw.....	22	8904-B 8904-Bnw.....	34
7012-63.....	53	8904-H 8904-Hnw.....	47
7012-A.....	53	8906-B 8906-Bnw.....	34
7022-A.....	54	8906-H 8906-Hnw.....	47
7501-A 7501-Anw.....	22	8908-B 8908-Bnw.....	35
7601-A 7602-A.....	23	8908-H 8908-Hnw.....	48
7700 7703.....	24	8912-B 8912-Bnw.....	36
7700-1 7706.....	25	8912-KKnw1 KK-UD.....	37
7701-E 7701-M.....	23	8920-B 8920-Bnw.....	36
7702-E.....	24	89NS.....	35
7704-E.....	25	9901-A 9901-Anw.....	18
7705-E.....	54	9902-A 9902-Anw.....	19
8100-E.....	55	9902-D 9902-Dnw.....	19
8302-A 8302-Anw.....	10	9904-A 9904-Anw.....	20
8308-A 8308-Anw.....	10	9912-T 9912-Tnw.....	48
8310-A.....	55	9913-Anw.....	49
8314-Anw.....	56	BT-4022.....	52
8501-B 8501-Bnw.....	40	ES-04-LED.....	64
8501-E 8501-Enw.....	43	ES-14.....	65
8502-B 8502-Bnw.....	40	ES-2 ES-1S.....	68
8502-E 8502-Enw.....	43	ES-22.....	65
8503-B 8503-Bnw.....	41	ES-250.....	66
8503-E 8503-Enw.....	44	ES-4.....	64
8504-B 8504-Bnw.....	41	ESC-004-LED.....	66
8504-E 8504-Enw.....	44	ESP-24.....	67
8506-B 8506-Bnw.....	42	EST-24.....	67
8506-E 8506-Enw.....	45	H21.....	56
8508-B 8508-Bnw.....	42	H21-532.....	57
8508-E 8508-Enw.....	45	SV-008 SV-016 SV-106.....	60
8601-A 8601-Anw.....	11		
8602-A 8602-Anw.....	11		
8604-A 8603-Anw.....	12		